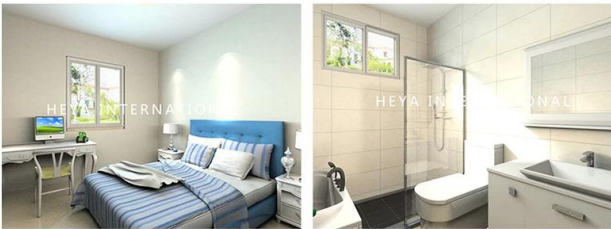
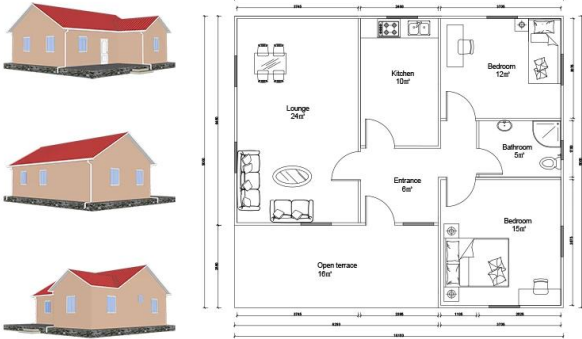


Ürün Açıklaması

Heya-2S05



QUOTATION SHEET							
NO.	Heya-2S05					DATE	
NO	ITEM	DESCRIPTION	UNIT	THEORY QTY	LOSS RATE	UNIT	ACTUAL QTY
Frame System							
1	Steel structure		m ²	75.00	1.00	T	3.00
2	Fittings		set	75.00	1.00	m ²	75.00
Wall System							
3	External wall foamed cement board	610*2270*T90mm	m ²	137.69	1.10	pc	110.00
4	Internal wall foamed cement board	610*2270*T60mm	m ²	71.15	1.10	pc	57.00
Roof System							
5	Roof panel	75mm EPS sandwich panel	m	87.60	1.10	m	96.36
Door & Window System							
7	PVC window		m ²	11.40	1.00	m ²	11.40
8	PVC door		m ²	10.80	1.00	m ²	10.80
Decoration System							
9	Ceiling	gypsum board,600*600mm 10pcs/pack	m ²	75.00	1.10	pack	9.00
10	Floor tile	ceramic tile 600*600mm 10pcs/pack	m ²	75.00	1.10	pack	9.00
11	Internal Putty	Brand Nippon 15kgs bag	m ²	279.99	1.10	bag	21.00
12	Internal wall coating	white,18L bucket	m ²	279.99	1.10	bucket	4.00
13	External wall coating	16L bucket	m ²	137.69	1.10	bucket	2.00
Water&Electric System							
14	Drain pipes ,gutter		m	38.00	1.00	m	38.00
15	Water Pipes	inlet & outlet pipes	m ²	75.00	1.00	m ²	75.00
16	Electric system	Include weak current ,exclude socket /switch/light,etc	m ²	75.00	1.00	m ²	75.00
Hardware Accessories System							
17	Hardware Accessories System		m ²	75.00	1.00	m ²	75.00
Fitting facilities							
18	Toilet		pc	0.00	1.00	pc	0.00
19	Basin		pc	0.00	1.00	pc	0.00
20	Shower		pc	0.00	1.00	pc	0.00
21	Kitchen Cabinet		m	0.00	1.00	m	0.00
Inland Transportation							
22	Inland cost	loading fee,truck transport ,custom declare port charges,etc.	nos				1.00
TOTAL PRICE (FOB Qingdao)				\$13,748.72			