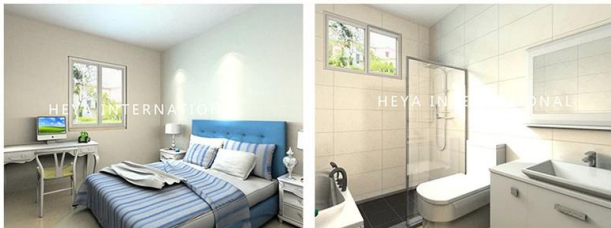
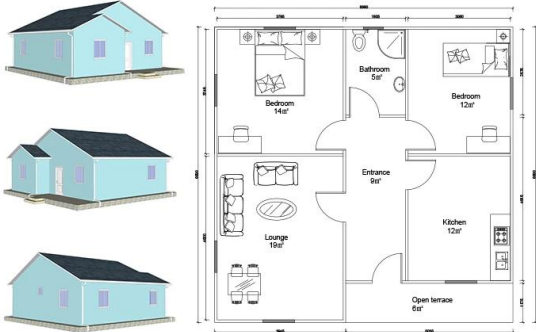
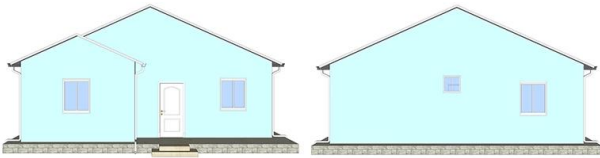


Ürün Açıklaması

Heya-2S04



QUOTATION SHEET

NO.	HY-2S04	DATE	
Item	Description	Qty	Unit
Steel frame	Beam HN200*100\HN250*125\square tube120x5mm	74	m ²
Exterior Wall	90mm ASA Sandwich Panel\90mm ASA	135.128	m ²
Interior Wall	90mm ASA Sandwich Panel\90mm ASA	67.578	m ²
Roof	90mm ASA Sandwich Panel\90mm	90.05	m ²
	asphalt shingles	90.05	m ²
Door	Out door (Steel door)\900*2000mm	1	pcs
	Inside door(MDF door)\800*2000mm	4	pcs
	bathroom door\PVC800mm x 2000mm(water proof)	1	pcs
Windows	PVC sliding window /PVC950(W)*1000mm(H)	6	pcs
	PVC sliding window /PVC950(W)*600mm(H)	1	pcs
Accessories	kinds of necessary screws\U type clipsealant\Special binder	74	m ²
Ceiling	PVC strip ceiling\PVC	74	m ²
Floor	ceramic tile/ 800x800mm	74	m ²
Drain system	drain pipes \gutter	33	m
EXW COST		\$12,597.67	
Inland Cost	40HC container loading	1	pcs
	20GP container loading	0	pcs
Workers loading Cost	40ft\20ft container	1	pcs
Total Amount (FOB Qingdao)		\$13,547.67	