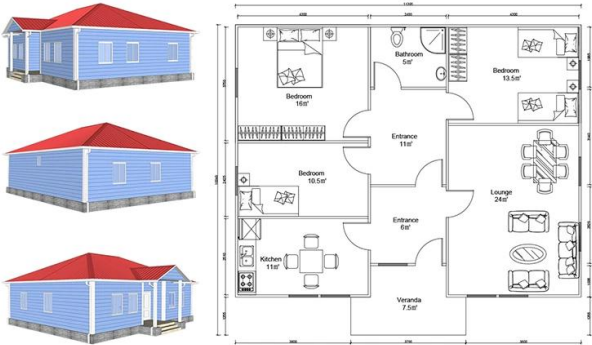


□□□□□□□□□□□□□□□□

# Heya-3S03



| QUOTATION SHEET                    |                                   |  |      |                    |           |        |            |
|------------------------------------|-----------------------------------|--|------|--------------------|-----------|--------|------------|
| Heya-3S03                          |                                   |  |      |                    |           |        |            |
| NO                                 | ITEM                              | DESCRIPTION  | UNIT | THEORY QTY         | LOSS RATE | UNIT   | ACTUAL QTY |
| <b>Frame System</b>                |                                   |  |      |                    |           |        |            |
| 1                                  | Steel structure                   |  | m²   | 107.00             | 1.00      | T      | 4.28       |
| 2                                  | Fittings                          |  | set  | 107.00             | 1.00      | m²     | 107.00     |
| <b>Wall System</b>                 |                                   |  |      |                    |           |        |            |
| 3                                  | External wall foamed cement board | 610*2270*130mm   | m²   | 127.00             | 1.10      | pc     | 101.00     |
| 4                                  | Internal wall foamed cement board | 610*2270*130mm   | m²   | 100.00             | 1.10      | pc     | 80.00      |
| <b>Roof System</b>                 |                                   |  |      |                    |           |        |            |
| 5                                  | Roof panel                        | 75mm EPS sandwich panel                                      | m    | 239.20             | 1.10      | m      | 263.12     |
| <b>Door &amp; Window System</b>    |                                   |  |      |                    |           |        |            |
| 7                                  | PVC window                        |  | m²   | 12.54              | 1.00      | m²     | 12.54      |
| 8                                  | PVC door                          |  | m²   | 14.40              | 1.00      | m²     | 14.40      |
| <b>Decoration System</b>           |                                   |  |      |                    |           |        |            |
| 9                                  | Ceiling                           | gypsum board,600*600mm 10pcs/pack                            | m²   | 107.00             | 1.10      | pack   | 12.00      |
| 10                                 | Floor tile                        | ceramic tile 600*600mm 10pcs/pack                            | m²   | 107.00             | 1.10      | pack   | 12.00      |
| 11                                 | Internal Putty                    | Brand:Nippon 15kgs/bag                                       | m²   | 327.00             | 1.10      | bag    | 24.00      |
| 12                                 | Internal wall coating             | white,18L/bucket   | m²   | 327.00             | 1.10      | bucket | 4.00       |
| 13                                 | External wall coating             | 16L bucket   | m²   | 127.00             | 1.10      | bucket | 2.00       |
| <b>Water&amp;Electric System</b>   |                                   |  |      |                    |           |        |            |
| 14                                 | Drain pipes_gutter                |  | m    | 43.00              | 1.00      | m      | 43.00      |
| 15                                 | Water Pipes                       | inlet & outlet pipes   | m²   | 107.00             | 1.00      | m²     | 107.00     |
| 16                                 | Electric system                   | include weak current,exclude socket/switch/light,etc         | m²   | 107.00             | 1.00      | m²     | 107.00     |
| <b>Hardware Accessories System</b> |                                   |  |      |                    |           |        |            |
| 17                                 | Hardware Accessories System       |  | m²   | 107.00             | 1.00      | m²     | 107.00     |
| <b>Fitting facilities</b>          |                                   |  |      |                    |           |        |            |
| 18                                 | Toilet                            |  | pc   | 0.00               | 1.00      | pc     | 0.00       |
| 19                                 | Basin                             |  | pc   | 0.00               | 1.00      | pc     | 0.00       |
| 20                                 | Shower                            |  | pc   | 0.00               | 1.00      | pc     | 0.00       |
| 21                                 | Kitchen Cabinet                   |  | m    | 0.00               | 1.00      | m      | 0.00       |
| <b>Inland Transportation</b>       |                                   |  |      |                    |           |        |            |
| 22                                 | Inland cost                       | loading fee,truck transport,custom declare,post charges,etc. | nos  |                    |           |        | 1.00       |
| <b>TOTAL PRICE (FOB Qiongdao)</b>  |                                   |  |      | <b>\$18,484.93</b> |           |        |            |

