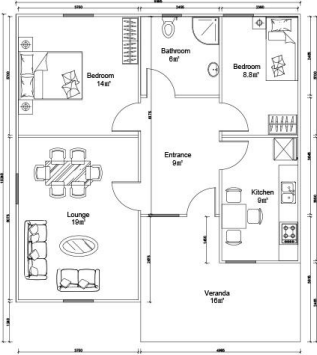
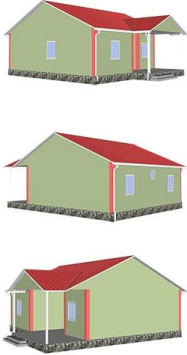


□□□□□□□□□□□□□□

Heya-2S08



| QUOTATION SHEET | | | | | | |
|------------------------------------|-----------------------------------|--|------|-------------------|-----------|-------------|
| NO. | Heya-2S08 | | DATE | | | |
| NO | ITEM | DESCRIPTION | UNIT | THEORY QTY | LOSS RATE | ACTUAL QTY |
| Frame System | | | | | | |
| 1 | Steel structure | | m² | 91 | 1 | T 3.64 |
| 2 | Fittings | | set | 91 | 1 | m² 91 |
| Wall System | | | | | | |
| 3 | External wall foamed cement board | 610*2270*190mm | m² | 144.276 | 1.1 | pc 115 |
| 4 | Internal wall foamed cement board | 610*2270*160mm | m² | 58.618 | 1.1 | pc 47 |
| Roof System | | | | | | |
| 5 | Roof panel | 75mm EPS sandwich panel | m | 111.6 | 1.1 | m 122.76 |
| Door & Window System | | | | | | |
| 7 | PVC window | | m² | 7.98 | 1 | m² 7.98 |
| 8 | PVC door | | m² | 10.8 | 1 | m² 10.8 |
| Decoration System | | | | | | |
| 9 | Ceiling | gypsum board,600*600mm 10pcs/pack | m² | 91 | 1.1 | pack 11 |
| 10 | Floor tile | ceramic tile 600*600mm 10pcs/pack | m² | 91 | 1.1 | pack 11 |
| 11 | Internal Putty | Brand Nippon 15kg/bag | m² | 261.5 | 1.1 | bag 20 |
| 12 | Internal wall coating | white,18L/bucket | m² | 261.5 | 1.1 | bucket 3 |
| 13 | External wall coating | 16L/bucket | m² | 144.8 | 1.1 | bucket 2 |
| Water&Electric System | | | | | | |
| 14 | Drain pipes ,gutter | | m | 43 | 1 | m 43 |
| 15 | Water Pipes | inlet & outlet pipes | m² | 91 | 1 | m² 91 |
| 16 | Electric system | Include weak current,exclude socket/switch/light,etc | m² | 91 | 1 | m² 91 |
| Hardware,Accessories System | | | | | | |
| 17 | Hardware Accessories System | | m² | 91 | 1 | m² 91 |
| Fitting facilities | | | | | | |
| 18 | Toilet | | pc | 0 | 1 | pc 0 |
| 19 | Basin | | pc | 0 | 1 | pc 0 |
| 20 | Shower | | pc | 0 | 1 | pc 0 |
| 21 | Kitchen Cabinet | | m | 0 | 1 | m 0 |
| Inland Transportation | | | | | | |
| 22 | Inland cost | loading fee,truck transport,custom declare port charges,etc. | nos | | | 261.50 1.00 |
| TOTAL PRICE (FOB Qingdao) | | | | 515,171.59 | | |

