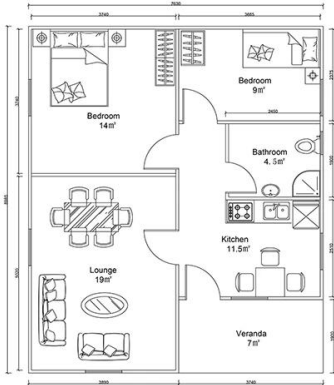
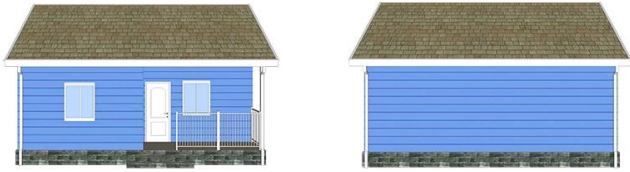


□□□□□□□□□□□□□□□□

# Heya-2Q07



PROJECT NO.	HY-2-Q07	DATE				
NAME	DESCRIPTION	UNIT	THEORY QTY	LOSS RATE	UNIT	ACTUAL QTY
<b>LGS Structure</b>						
steel structure		m²	69	1	T	2.28
fittings		set	69	1	m²	69.00
<b>Wall System</b>						
External wall OSB board	1220*2440*9mm	m²	151	1.15	pc	60.30
External wall unidirectional breath paper		m²	158.98	1.2	m²	190.78
External wall metal carved board	381*3800*16mm +381*4500*16mm	m²	151	1.15	m²	173.65
Internal wall OSB board	1220*2440*9mm	m²	166.5	1.12	pc	64.75
Internal wall gypsum board	1200*2400*9mm	m²	166.5	1.12	pc	64.75
Wet district fiber cement board	1220*2440*10mm	m²	57.42	1.12	pc	22.33
<b>Insulation System</b>						
Glasswool insulation	T75mm, 12 m³/roll 16Kg/m3	m²	187.46	1.1	roll	17.18
Glasswool insulation(under roof)	T75mm, 12 m³/roll 16Kg/m3	m²	76.3	1.1	roll	6.99
External wall XPS board	1200*600*40mm	m²	151	1.05	pc	220.21
<b>Roof System</b>						
Roof OSB board/OSB	1220*2440*12mm	m²	96.656	1.15	pc	38.60
self-paste waterproof coil	T1.5mm, -15°C, 20 m³/roll	m²	96.656	1.2	roll	5.80
Roof tile	asphalt tile	m²	96.656	1.2	pack	41.42
Roof ridge tile	asphalt tile	m	8.63	1.1	pack	1.19
Roof eaves pvc molding /PVC	6m/pc	m	39.66	1.1	pc	7.27
PVC closing strip/PVC	4m/pc	m	39.66	1.1	pc	10.91
Metal carved board under roof eaves	381*3800*16mm	m²	26.83	1.2	pc	22.36
<b>Door &amp; Window</b>						
PVC window		m²	7.98	1	m²	7.98
PVC door		m²	9	1	m²	9.00
Accessories for door sill/window sill	1220*2440*10mm	m	54.6	1.1	pc	4.17
<b>Water&amp;Electric System</b>						
Water Pipes		m²	69	1	m²	69.00
Electric system	Include weak current,exclude socket/switch/light.etc.	m²	69	1	m²	69.00
<b>Decoration Accessories System</b>						
Hardware Accessories System		m²	69	1	m²	69.00
<b>TOTAL EXW cost</b>				\$13,988.06		
<b>TOTAL FOB Qingdao</b>				\$14,888.06		
<b>TOTAL CIF XX</b>				\$16,962.51		











