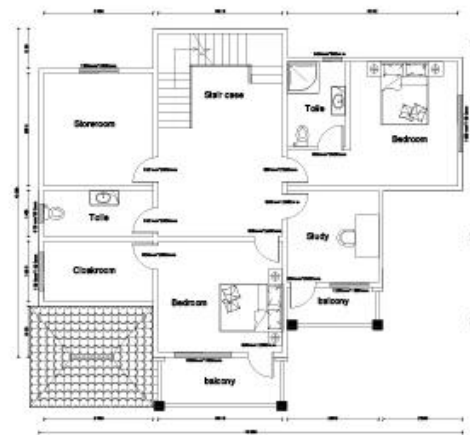
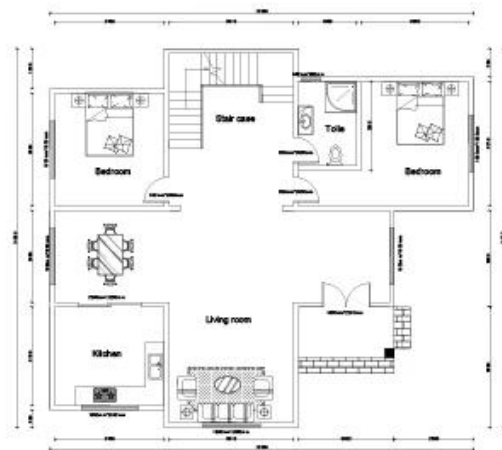


[Prefab Villas Luxury Supplier China](#) - Discover the Luxury High Quality Prefab Light Steel Housing Villa -QB13, offering elegant design, premium materials, and superior comfort for upscale living.

## Product Description





**Prefabricated steel buildings wholesales** – Offering modular light steel villas with integrated design, high safety standards, and superior seismic resistance. Durable, customizable, and built to last.

No.	NAME	DESCRIPTION	UNIT	THEORY QTY	LOSS RATE	UNIT
□	LGS Structure					
1	steel structure		□	204	1.00	T
2	fittings		set	204	1.00	□

□	Wall System					
1	External wall OSB board	1220*2440*9mm	□	343.14	1.30	pc
2	External wall unidirectional breath paper		□	547.14	1.30	m2
3	External wall wooden support	30*40*3000mm	m	1029.42	1.30	pc
4	External wall metal carved board	381*3800*16mm +381*4500*16mm	□	343.14	1.30	□
5	Internal wall OSB board	1220*2440*9mm	□	598	1.30	pc
6	Internal wall PVC board	1200*2400*9mm	□	598	1.20	m2
7	Wet district fiber cement board	1220*2440*10mm	□	141.1	1.30	pc
□	Insulation System					
1	Glasswool Insulation	T75mm□12□/roll 16Kg/m3	□	541.12	1.30	m2
2	Glasswool insulation(under roof)	T75mm□12□/roll 16Kg/m3	□	182.2	1.30	m2
3	External wall XPS board	1200*600*40mm	□	343.14	1.20	pc
□	Floor System					
1	Floor surface OSB	1220*2440*18mm	□	138.77	1.30	m2
2	Floor self-paste waterproof coil	T1.5mm□-15°C□20□/roll	□	138.77	1.20	roll
3	Floor tile	12mm	□	204	1.10	□
□	Roof System					
1	Roof OSB board	1220*2440*12mm	□	182.2	1.50	pc
2	self-paste waterproof coil	T1.5mm□-15°C□20□/roll	□	182.2	1.40	roll
3	Roof tile	asphalt tile	□	182.2	1.50	pack
4	Roof ridge tile	asphalt tile	m	100	1.10	pack
5	Roof eaves pvc molding	6m/pc	m	70.05	1.50	pc
6	PVC closing strip	4m/pc	m	70.05	1.50	pc
7	Metal carved board under roof eaves	381*3800*16mm	□	42.03	1.50	pc
□	Ceiling					
1	pvc ceiling	6000*200mm	□	204	1.20	□
2	pvc angle skirting		□	204	1.05	□
□	Door & Window					
1	Alumunium double glaze window		□	40	1.00	□
2	Steel and MDF door		□	20.4	1.00	□
□	Water&Electric System					
1	Water Pipes		□	204	1.00	□
2	Electric system	Include weak current,exclude socket/switch/light,etc	□	204	1.00	□
□	Accessories System		□	204	1.00	□
□	Loading		□	204	1.00	□

Click [prefab steel buildings solution China](#) to explore more high-end prefab products!