



## Low Cost Prefab House with High Quality

HEYA INTERNATIONAL

**HEYA Superior Quality Prefabricated Modular Container Building  
School Design**

**PRODUCT PHOTOS**







*Materials Introduction of prefabricated container house:*

<b>size:</b>	2500*5800*2650mm
<b>steel:</b>	Square tube and bending steel plate
<b>Wall:</b>	50mm EPS sandwich panel /rock wool sandwich panel,0.326/0.376/0.426/0.476mm steel sheet
<b>Wall color:</b>	White color and optional colors
<b>Roof:</b>	50mm EPS sandwich panel /rock wool sandwich panel ,0.326/0.376/0.426/0.476mm steel sheet
<b>Door :</b>	50mm EPS sandwich panel /rock wool sandwich panel,0.326/0.376/0.426/0.476mm steel sheet with lock /optional doors
<b>Window :</b>	Aluminum sliding door, PVC sliding door with security bar
<b>Floor:</b>	WPC board /optional floor
<b>Decoration wall:</b>	Optional : PVC cladding ,WPC cladding
<b>Electricity:</b>	Optional standard







<b>Install Time:</b>	2 workers 8mins
<b>Wind resistance:</b>	wind speed $\leq$ 120 km/h
<b>Earthquake resistance:</b>	Grade 7
<b>Snow load capacity of roofing:</b>	0.6kn/m <sup>2</sup>
<b>Live load capacity of roofing:</b>	0.6kn/m <sup>2</sup>
<b>Wall permitted loading:</b>	0.6kn/m <sup>2</sup>
<b>Heat conductivity coefficient:</b>	0.35kcal/m <sup>2</sup> hc
<b>Delivery time:</b>	About 15-20 working days
<b>Container loading:</b>	12 sets/1*40HQ



### Advantage:

NO.	Item	Content
1	Low cost	Low labour and material costs
2	Novel design	Beautiful and meet customer's requirement
3	Recycling use	Reused for more than 5 times
4	Long life-span	15-20 years
5	Easy to install	6 workers can finish 300sqm in 2 days
6	Comfortable	Suitable for living
7	Lightness	Easy to transport and relocate
8	Environment protection	Environment-friendly materials
9	Safe and stable	Fireproof, waterproof, quakeproof and windproof
10	Use widely	House, office, warehouse, workshop, carport, shop
11	Easy packing	320sqm can be loaded in a 40'HQ

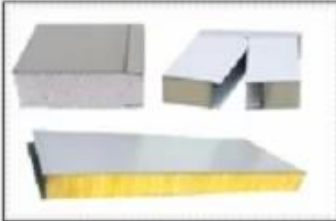
### Construction process







Steel Frame



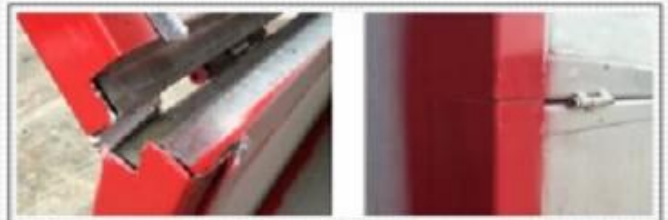
EPS Sandwich Panel  
Rock Wool Sandwich Panel  
Glass Wool Sandwich Panel



PVC Floor  
MGO Fireproof Board  
Fiber Cement Board



Light, Switch, Air Exhaust Fan



Accessories



Aluminium Window



Steel Security Door

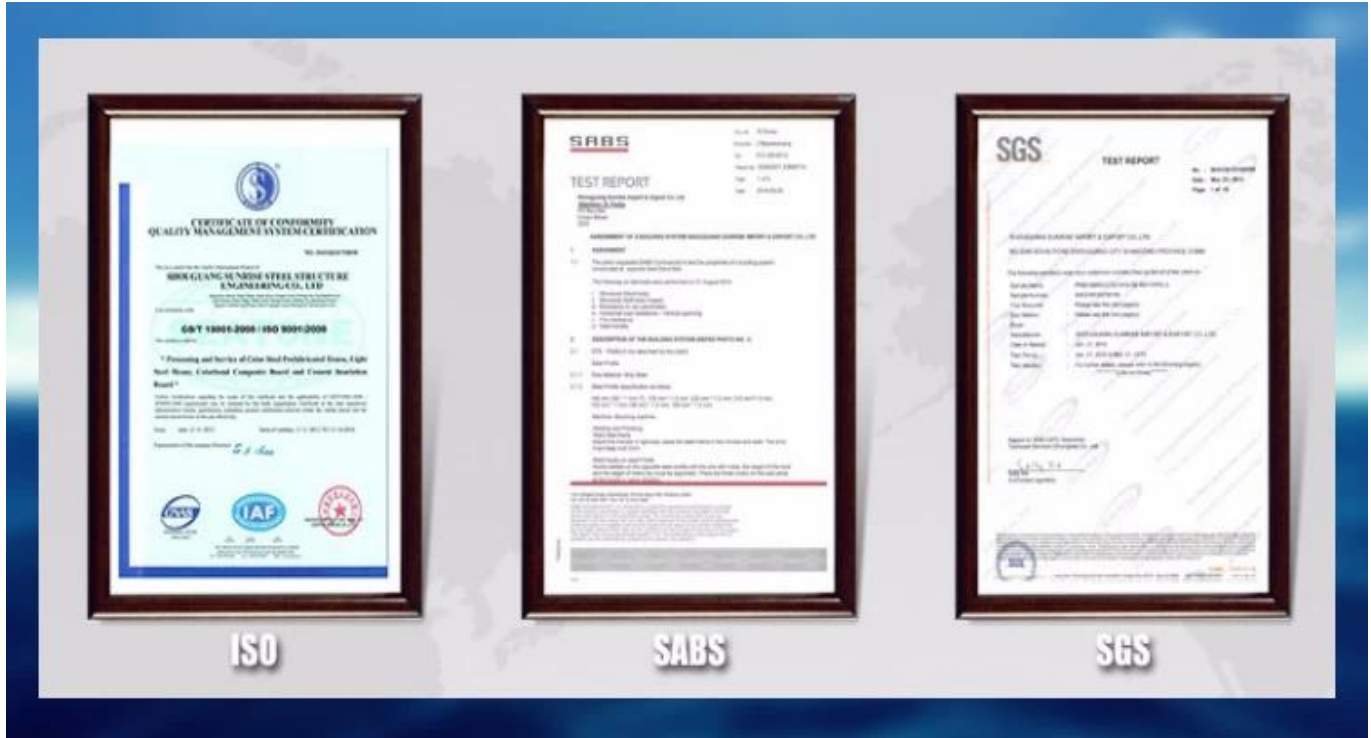


**Product detail**





**Our Certificates**



ISO

SABS

SGS

**Packaging & Shipping**

**Delivery by 40'HQ shipping container by bulk packing in general .**

Packaging	Mixed packaging:roof frame and bottom frame will be packed together with bolts;all the wall panels packed together with wooden pallet in the bottom,corrugated board on the surface,and XPS board in the interspace. And it will be shipped in 40' container .
Unloading	<b>40 feet</b> ocean freight container:
	A: Take out the small packages.
	B: Use folk lift to take out the wall panel packages.
	C: Grapple the corner on bottom side of the container house and drage the package out, remain about 50cm in the shipping container.
	D: Use folk lift to lift the container package in the middle and move it out of the shipping container.
	E: Put the package on ground sidewise , use wooden pad if it's flatwise.

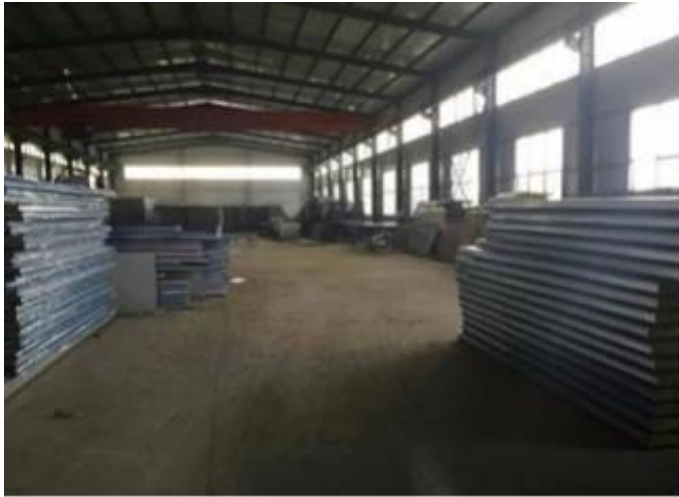






[SEND INQUIRY](#) [CLICK HERE](#)

**Heya international Company**      **best Chinese**  
**prefabricated housing solution supplier**



## **OUR CLIENTS**

**For client's information:**

**It will be very much helpful if clients can provide the following information:**

- |    |   |
|----|---|
| A. | Design drawing or layout plan if you have.  |
| B. | The dimension:length,width,height,windows and doors dimensions,etc.                                       |
| C. | The function of building,and if need,the interior equipment etc.  |
| D. | The class of building:one,two or three story.   |
| E. | Special requirement on function:such as water system,electricity installation, or other requirements etc. |



## Endeavour team



“

Endeavour team

”

## Global cooperation



“

Global cooperation

”

### Our Services

We offer prefab house, container home, modular house, prefab camp house, labor house, and so on. From design, to product, to sale, to install, offer complete train services.

- a. Your inquiry of our prefab houses will be replied in 24 hours.
- b. Good quality product, quick delivery time, competitive price, strong packing.
- c. Product can be customized according to your inquiry.
- d. We have enthusiastic and energetic sales force who can speak English fluently.

**In order to long-term friendly cooperation with you, we are focusing on product quality. So you can trust us completely!**

### FAQ:

#### 1, What's your Payment term?

50% deposit by TT, 50% balance before loading container by TT; 100% LC at sight total payment over 100,000USD);

#### 2, How about Shipping?

We use 40HQ container to ship the goods; Usually 40HQ container can load about 160-180square meters house.

#### 3, Delivery time?

Depend on MOQ, usually we can arrange shipment around 10days after received deposit

#### 4, How to install?

Usually we will provide installation drawing, and if necessary, we also provide installation video.

### **5, Can you send workers to help me build house?**

Considering the labor cost, safety and visa issues, we suggest to send one or two engineers to guide and train your staffs. You must provide air tickets, hotel, and meal, and 100USD per day for engineer salary.

## Contact us



Company Name: Heya Group

Contact Person: William Liu

Telephone/Whats App: 0086-15662593657

Email: [admin@chinaheya.com](mailto:admin@chinaheya.com)

Skype: chinaheya

Website: [www.chinaheya.com](http://www.chinaheya.com)

Wechat: vaststurf