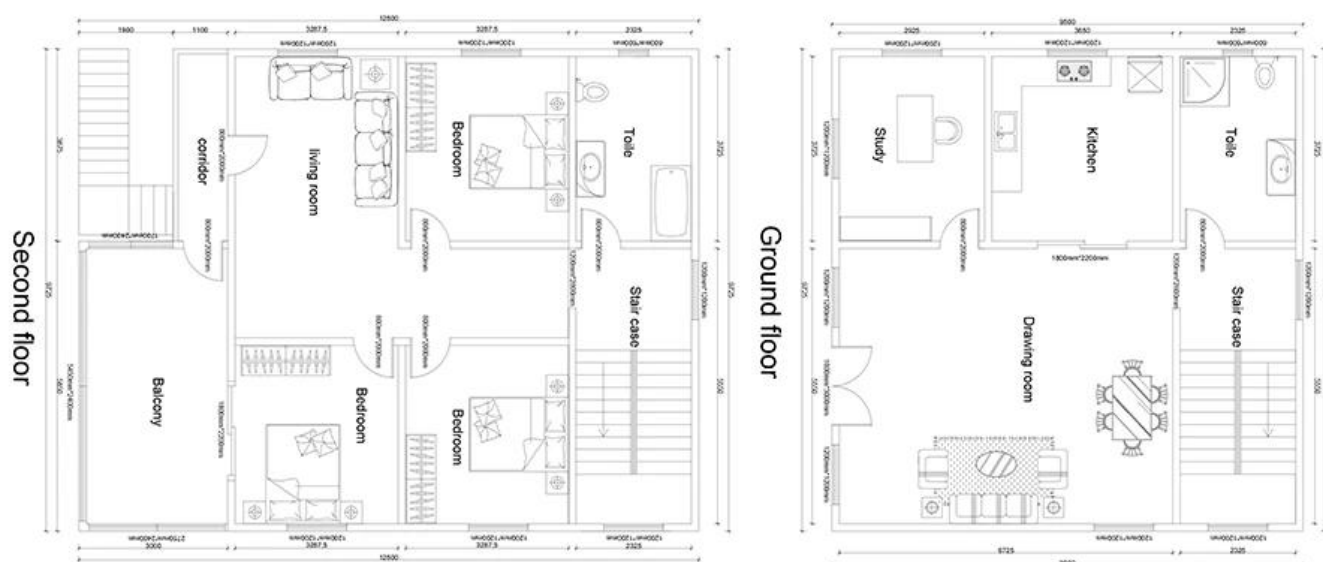


[Premade House Manufacturer China](#) | Prefabricated Simple Small House Design
Ideas Full Home Design Plan -QB28

Product Photo





[Readymade Homes Wholesales China](#) | simple small house is a complete home design plan for the design of prefabricated bungalows, which is very suitable for the design of double-storey villas with gardens.

Product Detail

No.	NAME	DESCRIPTION	UNIT	THEORY QTY	LOSS RATE	UNIT
□	LGS Structure					
1	steel structure		□	243	1.00	T
2	fittings		set	243	1.00	□
□	Wall System					
1	External wall OSB board	1220*2440*9mm	□	252.1	1.30	pc
2	External wall unidirectional breath paper		□	495.1	1.30	m2

3	External wall wooden support	30*40*3000mm	m	756.3	1.30	pc
4	External wall metal carved board	381*3800*16mm +381*4500*16mm	□	252.1	1.30	□
5	Internal wall OSB board	1220*2440*9mm	□	402.6	1.30	pc
6	Internal wall PVC board	1200*2400*9mm	□	402.6	1.20	m2
7	Wet district fiber cement board	1220*2440*10mm	□	116.85	1.30	pc
□	Insulation System					
1	Glasswool Insulation	T75mm□12□/roll 16Kg/m3	□	385.775	1.30	m2
2	Glasswool insulation(under roof)	T75mm□12□/roll 16Kg/m3	□	165	1.30	m2
3	External wall XPS board	1200*600*40mm	□	252.1	1.20	pc
□	Floor System					
1	Floor surface OSB	1220*2440*18mm	□	110	1.30	m2
2	Floor self-paste waterproof coil	T1.5mm□-15°C□20□/roll	□	110	1.20	roll
3	Floor tile	12mm	□	243	1.10	□
□	Roof System					
1	Roof OSB board	1220*2440*12mm	□	165	1.50	pc
2	self-paste waterproof coil	T1.5mm□-15°C□20□/roll	□	165	1.40	roll
3	Roof tile	asphalt tile	□	165	1.50	pack
4	Roof ridge tile	asphalt tile	m	27.9	1.10	pack
5	Roof eaves pvc molding	6m/pc	m	63.5	1.50	pc
6	PVC closing strip	4m/pc	m	63.5	1.50	pc
7	Metal carved board under roof eaves	381*3800*16mm	□	38.1	1.50	pc
□	Ceiling					
1	pvc ceiling/pvc	6000*200mm	□	243	1.20	□
2	pvc angle skirting		□	243	1.05	□
□	Door & Window					
1	Alumunium double glaze window		□	56.6	1.00	□
2	Steel and MDF door		□	9.6	1.00	□
□	Water&Electric System					
1	Water Pipes		□	243	1.00	□
2	Electric system	Include weak current,exclude socket/switch/light,etc	□	243	1.00	□
□	Accessories System		□	243	1.00	□
□	Loading		□	243	1.00	□

Item	Detail
Length	Inner length / external length5.81m / 6.06m
Width	Inner width/external width2.188/2.438m
Height	Inner height/external height2.410m/2.591m
Main structure	Light steel
Roof	Outside is 0.4mm color steel as the surface, middle is 100mm glass wool insulation. Permitted live loading0.75KN/m ²
Wall	50mm /75mm /100mm glass wool / rock wool sandwich panel, 0.4mm color steel sheet and 50kg/m3 glass wool density inside.
Base	External wainscot is 0.3mm galvanized steel sheet metal, and insulation is glass wool / rock wool.The supporting material is 18mm cement Magnesium Fibreboard and the inside decoration is 1.6mm PVC flooring.
Permitted loading	2 KN/m2
Window	PVC sliding/casement window or Aluminum Window
Door	Sandwich Panel door or Steel security door or glass door, furnished with lock.
Option Electric system	Provided plan, design and construction
Technical parameter	water proof,Sound proof,fire prevention and moisture proof

QUALITY [Prefab Steel Buildings Solutions China](#) - Durable, customizable, and cost-effective steel structures for residential, commercial, and industrial use. Fast assembly, energy-efficient, and compliant with international standards (ISO/CE/AS/US/CA). Contact us today for a free quote and design consultation!