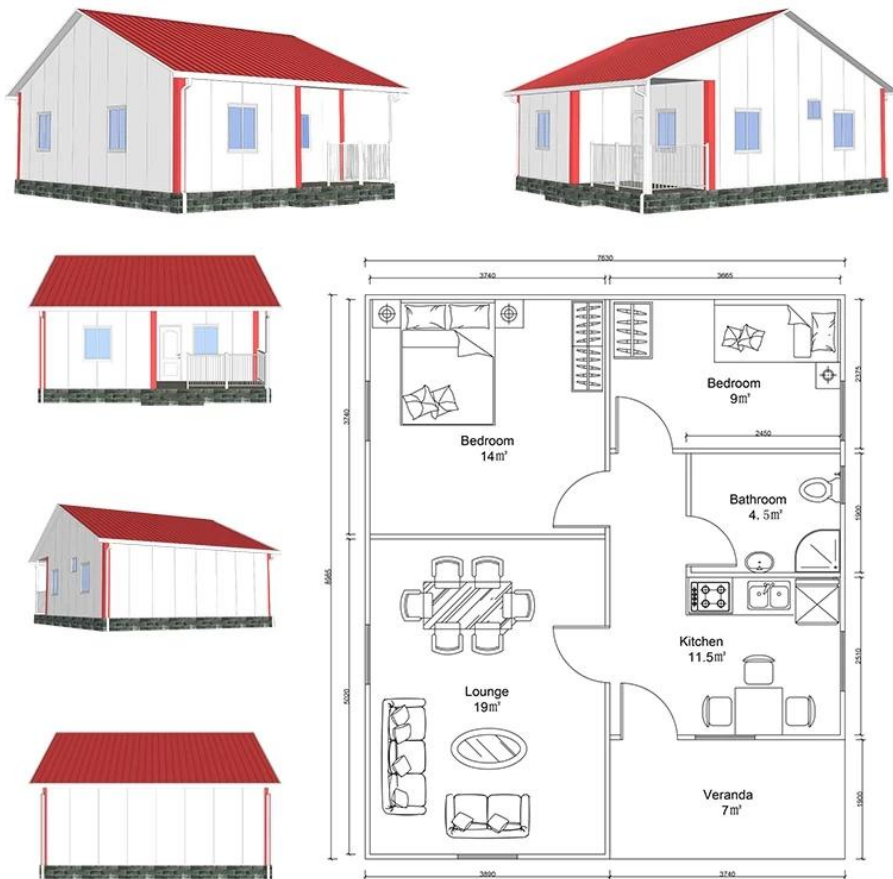


Product Description

Heya-2B07-A



BREAKDOWN QUOTATION SHEET				
NO.	HY-2B07-A			DATE
Item	Description	Qty	Unit	
Steel frame	C-type steel purlin and beam, square tube,steel channels	69	m2	
Exterior Wall	75mm EPS Color Steel Sandwich Panel pre-cut,with film protection	132.6	m	
Interior Wall	75mm EPS Color Steel Sandwich Panel pre-cut,with film protection	58.8	m	
Roof	75mm EPS Color Steel Sandwich Panelpre-cut,with film protection	89.1	m	
Ceiling	PVC ceiling	69	m2	
Floor	Ceramic tile 800x800mm	69	m2	
Door	Out door (Steel door) 900*2000mm	1	pcs	
	Bathroom door 800mm × 2000mm (water proof)	4	pcs	
Windows	PVC sliding window 950(W)*1000mm(H)	6	pcs	
	PVC sliding window 950(W)*600mm(H)	1	pcs	
Drain system	Drain pipes ,gutter	28	m	
Electric system		69	m2	
Accessories	Kinds of necessary screws, sealant, ridge tile, packet eaves. flashing, channel iron	69	m2	
Total Amount (Necessary Basic Fitting)		\$6,384.00		
Inland Cost	40HC container loading	1	pcs	
Workers loading Cost	40ft/20ft container	1	pcs	
Total Amount		\$7,334.00		

Company Introduction

Shandong Quality Company is one of the best Chinese prefabricated housing solution supplier.

Quality [prefab tiny house modern on sale](#), our products include prefabricated house, container house, mobile homes, villas, light steel structure.

We have more 10 years experience in the industry, professional manufacture and procurement team,

maintain long-term cooperative relationship with many well-known manufacturers.

Already finish Germany Refugee container house project, Zimbabwe Prefabricated Classroom

Project,

South Africa Prefab House, Uruguay Prefab Villages House project, and so on.

Our company is committed to become your trusted partner, you focus on your area of expertise,

let us help you deal with the temporary office and warehouse of a comprehensive solution.



Our factory is located in the beautiful kite capital of Weifang, Shandong. In recent years, the factory strength has been growing and developing, and its production strength and quality services have won the praise of our clients from all over the world. We welcome every customer to visit the factory and inspect the quality of the product.

Focus on "Quality & Service", one stop service help you save cost, reduce your all worries, turn over perfect project.

A. Professional design and engineering team: Full solution for steel structure design

B. Procurement and Manufacture for all material for prefabricated building. We have a professional procurement team to make sure all the materials are with good quality. And our factory operation under ISO/CE/SGS standard, to make sure the fabrication works with high technology.

C. Site management & Installation supervision, We could send our engineers to help for the installation supervision, you just need to prepare a team which know normal construction

works will be O.K.

Click [pre built tiny homes price](#) for more information.

Packing&Shipping

Packing Details : 1, Delivery by 40'HQ shipping container. 2, 4 in 1 flat packing

Delivery Details : 3-20 days after order



Our Clients



FAQ

1, What's your Payment term?

50% deposit by TT, 50% balance before loading container by TT; 100% LC at sight(total payment over 100,000USD);

2, How about Shipping?

We use 40HQ container to ship the goods; Usually 40HQ container can load about 160-180 square meters house.

3, Delivery time?

Depend on MOQ, usually we can arrange shipment around 10 days after received deposit.

4, How to install?

Usually we will provide installation drawing, and if necessary, we also provide installation video.

5, Can you send workers to help me build house?

Considering the labor cost, safety and visa issues, we suggest to send one or two engineers to guide and train your staffs.

You must provide air tickets, hotel, and meal, and 100USD per day for engineer salary.