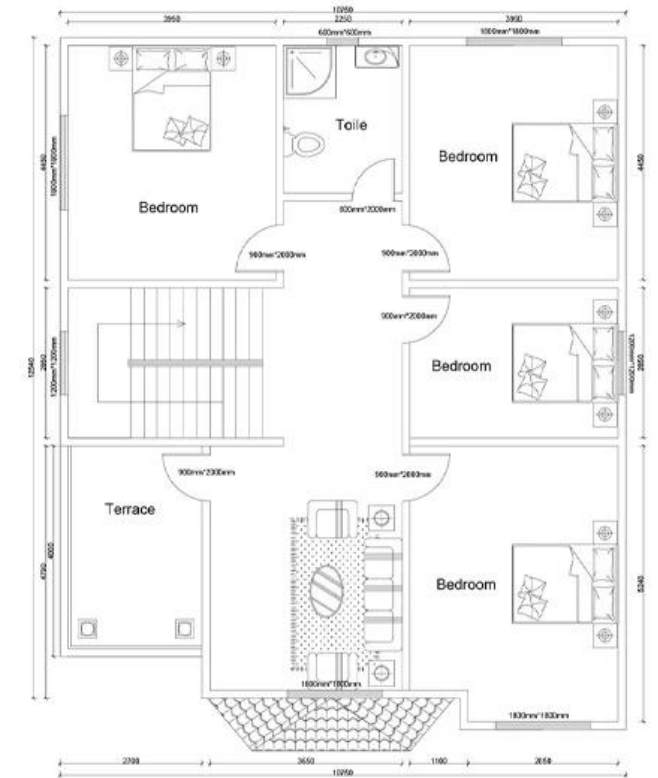


Ground floor



Second floor

## Prefab Houses details

### Structure

light steel as its main frame, safe and reliable; sandwich panels as its roof and wall boards, looks and beautiful decoration

**Environmental protection and economized**

prefab houses are reasonable in design, can be removed or recycled more than 5 times

**Applications**

prefab houses can be used as permanent & temporary residence, laborers accommodation, office, workshop, warehouse, etc

**Advantages**

High performance in quakeproof, waterproof, windproof, moisture proof, heat insulation and sound insulation

**Inside facilities**

Floorings, ceiling, water system, electrics, toilets, etc. are optional for clients' choice

**Quick installation**

It is convenient to install, a skilled worker can install 20sqm-30sqm one day

**Transportation**

The completely knock-down of prefab house components can save more space of the sea container and make the freight cost of house much lower