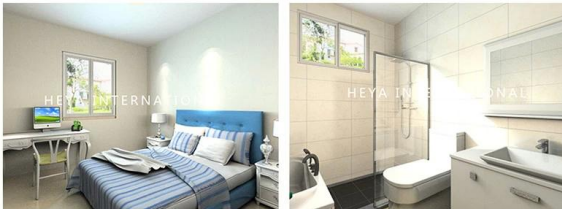
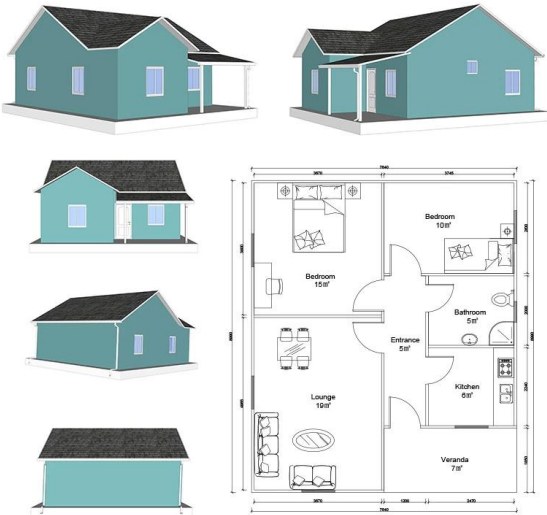


## **Product description**

## Heya-2S03



### QUOTATION SHEET

NO.	HY-2S03	DATE	
Item	Description	Qty	Unit
Steel frame	Beam HN200*100\HN250*125\square tube120x6mm	68	m2
Exterior Wall	90mm ASA Sandwich Panel\90mm ASA	114	m2
Interior Wall	90mm ASA Sandwich Panel\90mm ASA	59.598	m2
Roof	90mm ASA Sandwich Panel\91mm	96.6	m2
	asphalt shingles	96.6	m2
Door	Out door (Steel door)\900*2001mm	1	pcs
	Inside door(MDF door)\800*2001mm	4	pcs
	bathroom door/PVC800mm x 2001mm(water proof)	1	pcs
Windows	PVC sliding window /PVC950(W)*200mm(H)	5	pcs
	PVC sliding window /PVC950(W)*200mm(H)	1	pcs
Accessories	kinds of necessary screws/U type clipsealant\Special binder	68	m2
Ceiling	PVC strip ceiling/PVC	68	m2
Floor	ceramic tile/ 800x801mm	68	m2
Drain system	drain pipes \gutter	32.4	m
<b>EXW COST</b>		<b>\$11,756.57</b>	
Inland Cost	41HC container loading	1	pcs
	21GP container loading	0	pcs
Workers loading Cost	40ft/21ft container	1	pcs
<b>Total Amount (FOB Qingdao)</b>		<b>\$12,706.57</b>	