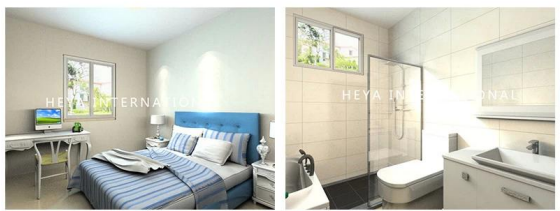
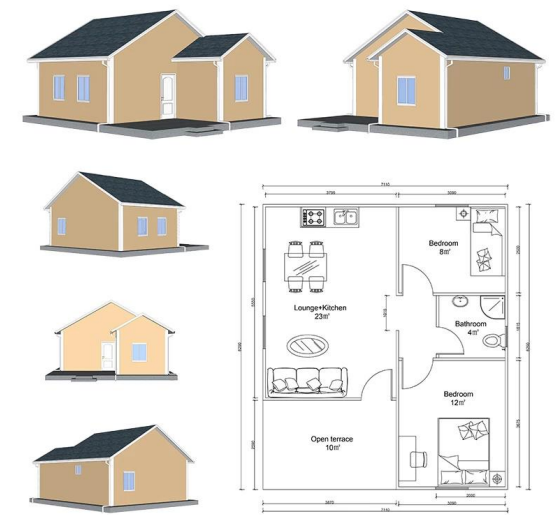


Product Description

Heya - 2S01



QUOTATION SHEET			
NO.	HY-2S01	DATE	
Item	Description	Qty	Unit
Steel frame	Beam HN200*100/HN250*125/square tube 120x5mm	40	m2
Exterior Wall	90mm ASA Sandwich Panel/90mm ASA	85.8	m2
Interior Wall	90mm ASA Sandwich Panel/90mm ASA	24	m2
Roof	90mm ASA Sandwich Panel/90mm	66.5	m2
	asphalt shingles	66.5	m2
Door	Out door (Steel door)/900*2000mm	1	pcs
	Inside door(MDF door)/800*2000mm	1	pcs
	bathroom door/PVC800mm x 2000mm(water proof)	1	pcs
Windows	PVC sliding window /PVC950(W)*1000mm(H)	3	pcs
	PVC sliding window /PVC950(W)*600mm(H)	1	pcs
Accessories	kinds of necessary screws/U type clips/ant\Special binder	40	m2
Ceiling	PVC strip ceiling/PVC	40	m2
Floor	ceramic tile/ 800x800mm	40	m2
Drain system	drain pipes \gutter	21	m
EXW COST		S7,285.10	
Inland Cost	40HC container loading	1	pcs
	20GP container loading	0	pcs
Workers loading Cost	40ft/20ft container	1	pcs
Total Amount /(FOB Qingdao)		S8,235.10	

Company Introduction

Shandong Heya Company is the best Chinese prefabricated housing solution supplier.

Our products include prefabricated house, container house, mobile homes, villas, light steel structure.

We have more 10 years experience in the industry, professional manufacture and procurement team,

maintain long-term cooperative relationship with many well-known manufacturers.

Already finish Germany Refugee container house project, Zimbabwe Prefabricated Classroom Project,

South Africa Prefab House, Uruguay Prefab Villages House project, and so on.

Our company is committed to become your trusted partner, you focus on your area of expertise,

let us help you deal with the temporary office and warehouse of a comprehensive solution.



Our factory is located in the beautiful kite capital of Weifang, Shandong.

We welcome every customer to visit the factory and inspect the quality of the product.

Certificate



Focus on "Quality & Service", one stop service help you save cost, reduce your all worries,turn over perfect project.

A. Professional design and engineering team: Full solution for steel structure design B.

Procurement and Manufacture for all material for prefabricated building.

We have a professional procurement team to make sure all the materials are with good quality.

And our factory operation under ISO/CE/SGS standard, to make sure the fabrication works with high technology.

C.Site management & Installation supervision, We could send our engineers to help for the installation supervision,

you just need to prepare a team which know normal construction works will be O.K.

Packing&Shipping

Packing Details : 1, Delivery by 40'HQ shipping container. 2, 4 in 1 flat packing

Delivery Details : 3-20 days after order



Our Clients





FAQ

1, What's your Payment term?

50% deposit by TT, 50% balance before loading container by TT; 100% LC at sight(total payment over 100,000USD);

2, How about Shipping?

We use 40HQ container to ship the goods; Usually 40HQ container can load about 160-180 square meters house.

3, Delivery time?

Depend on MOQ, usually we can arrange shipment around 10 days after received deposit.

4, How to install?

Usually we will provide installation drawing, and if necessary, we also provide installation video.

5, Can you send workers to help me build house?

Considering the labor cost, safety and visa issues, we suggest to send one or two engineers to guide and train your staffs.

You must provide air tickets, hotel, and meal, and 100USD per day for engineer salary.