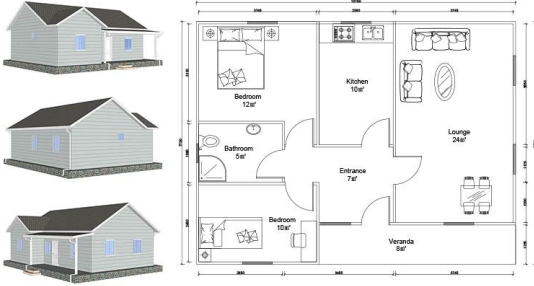


Product Description

Heya-2Q06



NAME	DESCRIPTION	UNIT	THEORY QTY	LOSS RATE	UNIT	ACTUAL QTY
LGS Structure						
steel structure		m²	78.00	1.00	T	2.57
fittings		set	78.00	1.00	m²	78.00
Wall System						
External wall OSB board	1220*2440*9mm	m²	149.25	1.15	pc	59.60
External wall unidirectional breath paper		m²	158.37	1.20	m²	190.04
External wall metal carved board	381*3800*16mm +381*4500*16mm	m²	149.25	1.15	m²	171.64
Internal wall OSB board	1220*2440*9mm	m²	209.30	1.12	pc	81.39
Internal wall gypsum board	1200*2400*9mm	m²	209.30	1.12	pc	81.39
Wet district fiber cement board	1220*2440*10mm	m²	70.88	1.12	pc	27.57
Insulation System						
Glasswool Insulation	T75mm- 12m³/roll 16Kg/m³	m²	214.72	1.10	roll	19.68
Glasswool insulation(under roof)	T75mm- 12m³/roll 16Kg/m³	m²	81.55	1.10	roll	7.48
External wall XPS board	1200*600*40mm	m²	149.25	1.05	pc	217.66
Roof System						
Roof OSB board OSB	1220*2440*12mm	m²	137.10	1.15	pc	54.75
self-paste waterproof coil	T1.5mm- -15°C- 20m³/roll	m²	137.10	1.20	roll	8.23
Roof tile	asphalt tile	m²	137.10	1.20	pack	58.76
Roof ridge tile	asphalt tile	m	15.40	1.10	pack	2.12
Roof eaves pvc molding /PVC	6m/pc	m	50.00	1.10	pc	9.17
PVC closing strip/PVC	4m/pc	m	50.00	1.10	pc	13.75
Metal carved board under roof eaves	381*3800*16mm	m²	36.08	1.20	pc	30.07
Door & Window						
PVC window		m²	9.12	1.00	m²	9.12
PVC door		m²	10.80	1.00	m²	10.80
Accessories for door sill/window sill	1220*2440*10mm	m	63.80	1.10	pc	4.87
Water&Electric System						
Water Pipes		m²	78.00	1.00	m²	78.00
Electric system	include weak current exclude socket/switch/light etc	m²	78.00	1.00	m²	78.00
Decoration Accessories System		m²	78.00	1.00	m²	78.00
Hardware Accessories System		m²	78.00	1.00	m²	78.00
TOTAL EXW cost				\$15,968.88		
TOTAL FOB Qingdao				\$16,598.88		
TOTAL CIF XX				\$18,681.87		

Company Introduction

Shandong Heya Company is the best Chinese prefabricated housing solution supplier.

Our products include prefabricated house, container house, mobile homes, villas, light steel structure.

We have more 10 years experience in the industry, professional manufacture and procurement team,

maintain long-term cooperative relationship with many well-known manufacturers.

Already finish Germany Refugee container house project, Zimbabwe Prefabricated Classroom Project,

South Africa Prefab House, Uruguay Prefab Villages House project, and so on.

Our company is committed to become your trusted partner, you focus on your area of expertise,

let us help you deal with the temporary office and warehouse of a comprehensive solution.



Our factory is located in the beautiful kite capital of Weifang, Shandong.

In recent years, the factory strength has been growing and developing,

and its production strength and quality services have won the praise of our clients from all over the world.

We welcome every customer to visit the factory and inspect the quality of the product.

Certificate



Focus on "Quality & Service", one stop service help you save cost, reduce your all worries,turn over perfect project.

A. Professional design and engineering team: Full solution for steel structure design B.

Procurement and Manufacture for all material for prefabricated building.

We have a professional procurement team to make sure all the materials are with good quality.

And our factory operation under ISO/CE/SGS standard, to make sure the fabrication works with high technology.

C.Site management & Installation supervision, We could send our engineers to help for the installation supervision,

you just need to prepare a team which know normal construction works will be O.K.

Packing&Shipping

Packing Details : 1, Delivery by 40'HQ shipping container. 2, 4 in 1 flat packing

Delivery Details : 3-20 days after order



Our Clients





FAQ

1, What's your Payment term?

50% deposit by TT, 50% balance before loading container by TT; 100% LC at sight(total payment over 100,000USD);

2, How about Shipping?

We use 40HQ container to ship the goods; Usually 40HQ container can load about 160-180 square meters house.

3, Delivery time?

Depend on MOQ, usually we can arrange shipment around 10 days after received deposit.

4, How to install?

Usually we will provide installation drawing, and if necessary, we also provide installation video.

5, Can you send workers to help me build house?

Considering the labor cost, safety and visa issues, we suggest to send one or two engineers to guide and train your staffs.

You must provide air tickets, hotel, and meal, and 100USD per day for engineer salary.