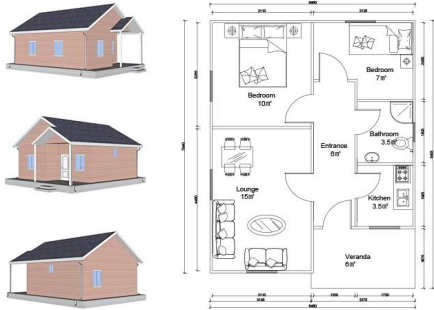


**Product Description**

## Heya-2Q02



NAME	DESCRIPTION	UNIT	THEORY QTY	LOSS RATE	UNIT	ACTUAL QTY
<b>LGS Structure</b>						
steel structure		m <sup>2</sup>	53	1.00	T	1.75
fittings		set	53	1.00	m <sup>2</sup>	53.00
<b>Wall System</b>						
External wall OSB board	1220*2440*9mm	m <sup>2</sup>	118.3	1.15	pc	47
External wall unidirectional breath paper		m <sup>2</sup>	124	1.20	m <sup>2</sup>	149
External wall metal carved board	381*3800*16mm+381*4500*16mm	m <sup>2</sup>	118.3	1.15	m <sup>2</sup>	136
Internal wall OSB board	1220*2440*9mm	m <sup>2</sup>	127.5	1.12	pc	50
Internal wall gypsum board	1200*2400*9mm	m <sup>2</sup>	127.5	1.12	pc	50
Wet district fiber cement board	1220*2440*10mm	m <sup>2</sup>	48.5	1.12	pc	19
<b>Insulation System</b>						
Glasswool insulation	T75mm, 12 m <sup>2</sup> /roll 16Kg/m3	m <sup>2</sup>	147.15	1.10	roll	13
Glasswool insulation(under roof)	T75mm, 12 m <sup>2</sup> /roll 16Kg/m3	m <sup>2</sup>	53	1.10	roll	5
External wall XPS board	1200*600*40mm	m <sup>2</sup>	118.3	1.05	pc	173
<b>Roof System</b>						
Roof OSB board OSB	1220*2440*12mm	m <sup>2</sup>	92	1.15	pc	37
self-paste waterproof coil	T1.5mm, -15°C, 20 m <sup>2</sup> /roll	m <sup>2</sup>	92	1.20	roll	6
Roof tile	asphalt tile	m <sup>2</sup>	92	1.20	pack	39
Roof ridge tile	asphalt tile	m	10.467	1.10	pack	1
Roof eaves pvc molding /PVC	6m/pc	m	42.584	1.10	pc	8
PVC closing strip/PVC	4m/pc	m	42.584	1.10	pc	12
Metal carved board under roof eaves	381*3800*16mm	m <sup>2</sup>	25.55	1.20	pc	21
<b>Door &amp; Window</b>						
PVC window		m <sup>2</sup>	5.7	1.00	m <sup>2</sup>	5.70
PVC door		m <sup>2</sup>	10.8	1.00	m <sup>2</sup>	10.80
Accessories for door sill/window/sill	1220*2440*10mm	m	52.2	1.10	pc	4
<b>Water&amp;Electric System</b>						
Water Pipes		m <sup>2</sup>	53	1.00	m <sup>2</sup>	53.00
Electric system	Include weak current exclude socket switch/light etc.	m <sup>2</sup>	53	1.00	m <sup>2</sup>	53.00
<b>Decoration Accessories System</b>		m <sup>2</sup>	53	1.00	m <sup>2</sup>	53.00
<b>Hardware Accessories System</b>		m <sup>2</sup>	53	1.00	m <sup>2</sup>	53.00
<b>TOTAL EXW cost</b>				\$11,582.60		
<b>TOTAL FOB Qingdao</b>				\$12,482.60		
<b>TOTAL CIF XX</b>				\$14,545.02		

## Business Presentation

Shandong Heya Company is the best supplier of Chinese prefabricated housing solutions.

Our products include prefabricated houses, containers, mobile homes, villas and lightweight steel structures.

We have more than 10 years of experience in the industry, professional manufacturing and procurement team,

maintain long-term cooperative relationships with many renowned manufacturers.

Already completed the project of container house for refugees in Germany, the prefabricated classroom project of Zimbabwe,

Prefabricated house of South Africa, prefabricated village house project in Uruguay, etc.

Our company is committed to becoming your trusted partner, you focus on your area of expertise,

let us help you manage the temporary office and warehouse of a complete solution.



Our factory is located in the beautiful kite capital of Weifang, Shandong.

In recent years, the strength of the factory has grown and developed,

and its production strength and quality services have been praised by our customers around the world.

We invite each customer to visit the factory and inspect the quality of the product.

## Certificate



Focus on " Quality & Service ", a unique service helps you to reduce costs, reduce all your worries, to put back the perfect project.

A. Design and Professional Engineering Team: Complete Solution for Designing Steel Structures B.

Supply and manufacture for all materials for prefabricated buildings.

We have a professional sourcing team to make sure all materials are of good quality.

And our factory operation according to ISO / CE / SGS, to ensure that the manufacturing works with high technology.

C.Site management & installation supervision, we could send our engineers to assist in the supervision of the installation,



you just need to prepare a team that knows that normal construction work will be O.K.

## Packing and Shipping

Packaging Details: 1, delivery by 40'HQ shipping container. 2, 4 in 1 flat package

Delivery Details: 3-20 days after order



## Our clients







## FAQ

### 1, What is your payment term?

Deposit of 50% by TT, balance of 50% before the loading of the container by TT; 100% LC at sight (total payment over USD 100,000);

### 2, How about the shipment?

We use a 40HQ container to ship the goods; Typically, the 40HQ container can load about 160 to 180 square meters of the house.

3, delivery time?

Depend on MOQ, usually we can arrange the shipment around 10 days after the deposit received.

4, how to install?

In general, we provide the installation drawing and, if necessary, we also provide an installation video.

5, Can you send workers to help me build a house?

Given labor, security and visa costs, we suggest sending one or two engineers to guide and train your staff.

You must provide airline tickets, hotel and meals, as well as \$ 100 per day for the engineer's salary.