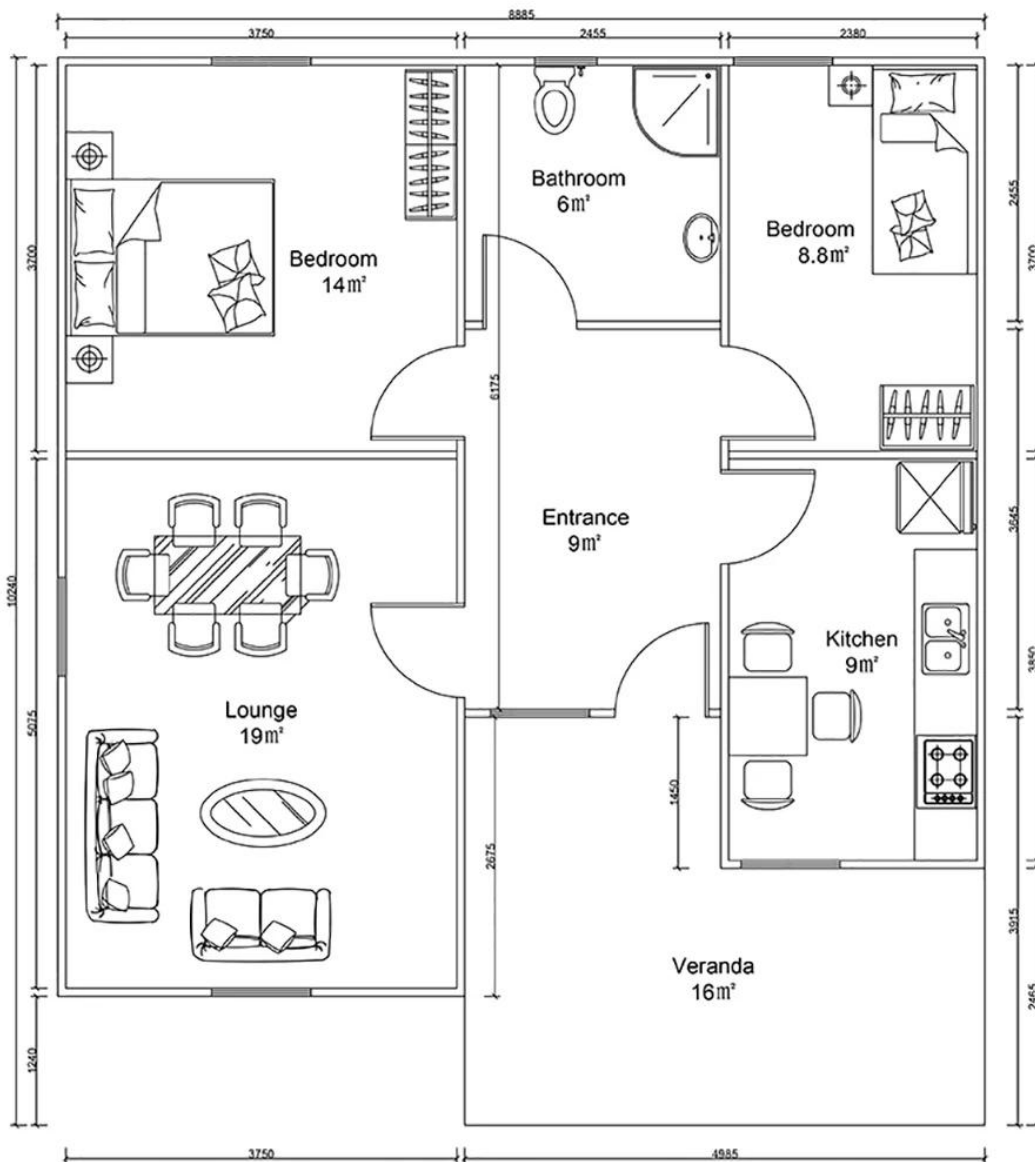


# HY-P14



**BREAKDOWN QUOTATION SHEET**

<b>NO.</b>		<b>DATE</b>	
<b>PROJECT</b>			
<b>Item</b>	<b>Description</b>	<b>Qty</b>	<b>Unit</b>
<b>Steel frame</b>	C-type steel purlin and beam, square tube, steel channels	91	□
<b>Exterior Wall</b>	75mm EPS Color Steel Sandwich Panel, pre-cut, with film protection	154.8	m
<b>Interior Wall</b>	75mm EPS Color Steel Sandwich Panel, pre-cut, with film protection	67.2	m
<b>Roof</b>	75mm EPS Color Steel Sandwich Panel, pre-cut, with film protection	111.6	m
<b>Ceiling</b>	PVC ceiling/pvc	91	□
	Gypsum board 600*600mm		□
	Fiber cement board		□
<b>Base/Foundation</b>	Plywood board		□
	PVC leather floor		□
	Ceramic tile 800x800mm	91	□
<b>Floor</b>	Ceramic tile 800x800mm	91	□
<b>Roof decoration</b>	Asphalt tile	103.55	□
<b>External Wall decoration</b>	Metal carved plate		□
	PVC hanging board/PVC	140	□
<b>Door</b>	Out door (Steel door) 900*2000mm	1	pcs
	Inside door MDF 800*2000mm/MDF		pcs
	Aluminium-alloy glass door		□
	PVC glass door		□
	Bathroom door 800mm x 2000mm (water proof) /PVC	5	pcs
	PVC sliding window 950(W)*1000mm(H)	6	pcs
<b>Windows</b>	PVC sliding window 950(W)*600mm(H)	1	pcs
	Aluminium-alloy window		pcs
<b>Drain system</b>	Drain pipes ,gutter	35	m
<b>Electric system</b>		91	□
<b>Accessories</b>	Kinds of necessary screws, sealant, ridge tile, packet eaves, flashing, channel iron	91	□