





**7.8x3.8x2.7m**

**living room:1**

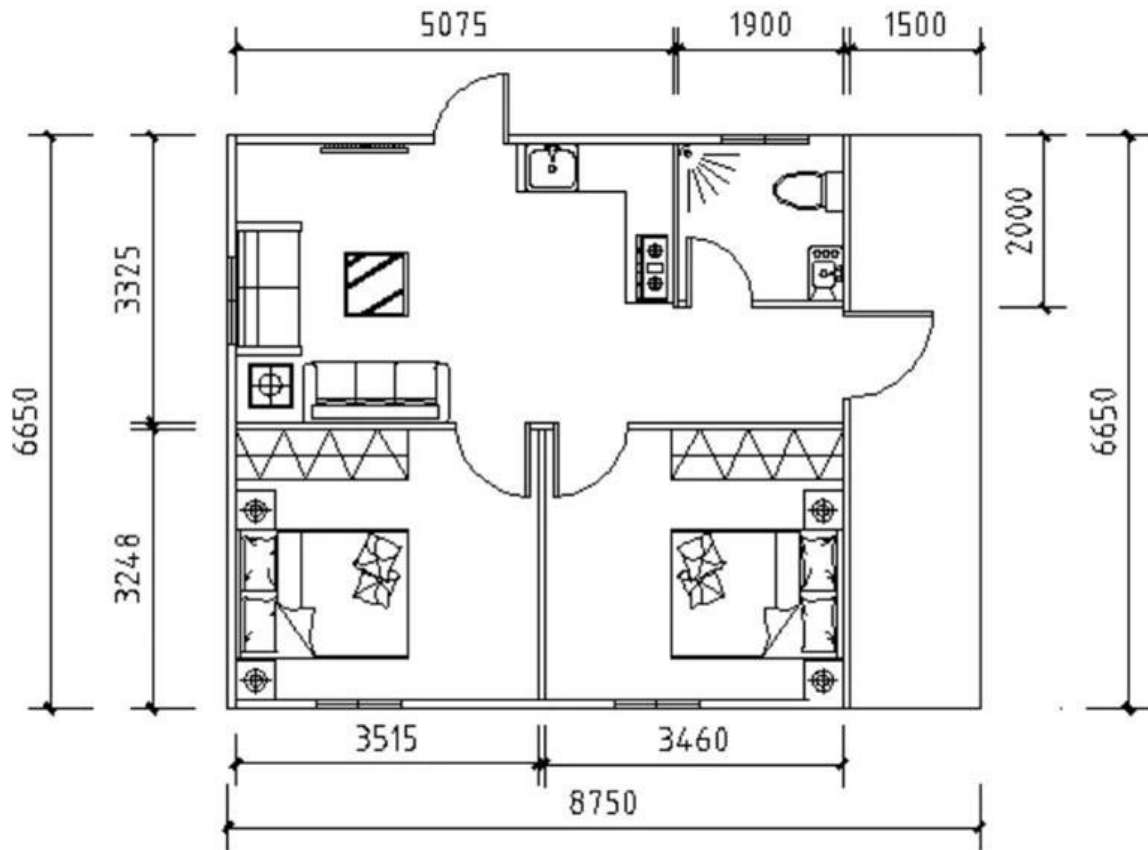
**bedroom:2**

**kitchen:1**

**barthroom:1**

**100mm+75mm sandwich panel(iron sheet thickness 0.45mm,18kg/m3)**

**C-  
type steel purlin and beam,square tube,steel channels,with floor base,exterior wall  
decoration,pvc celing,drain system,accessories**



## ECONOMIC LINE

<b>Steel frame</b>	C-type steel purlin and beam, square tube, steel channels, C100*50*20mm, galvanized
<b>Exterior Wall</b>	75mm EPS Color Steel Sandwich Panel, 0.45mm steel sheet, 10kgs/m <sup>3</sup> , film protect
<b>Interior Wall</b>	50mm EPS Color Steel Sandwich Panel, 0.45mm steel sheet, 10kgs/m <sup>3</sup> , film protect
<b>Roof</b>	75mm EPS 10 KGS corrugated color steel sandwich panel (colors?)
<b>Floor</b>	yes
<b>Ceiling</b>	PVC ceiling
<b>Door</b>	Out door (Steel Security exterior door) with lock 950*2000mm Inside door with lock 850*2000mm
<b>Windows</b>	PVC sliding window with fly screen, double glasses, 950(W)*1000mm(H) for living house, with shutter PVC sliding window with fly screen, double glasses 600(W)*600mm(H), with shutter
<b>Out Drain systems (rain)</b>	yes
<b>Accessories</b>	kinds of necessary screws, sealant, ridge tile, packet eaves, color steel flash