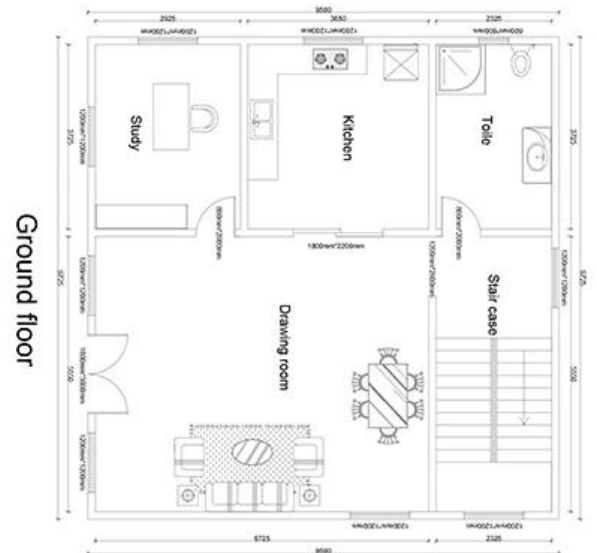
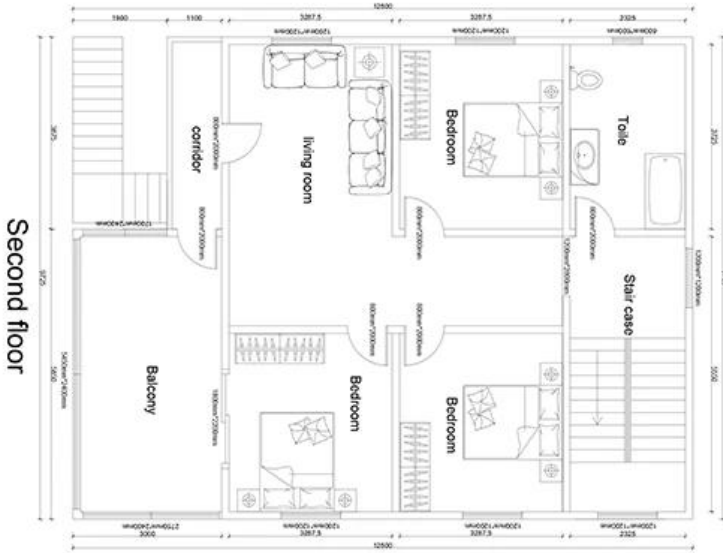


**produkto Larawan**





**produktu Detalye**

a  
 b  
 c  
 d  
 e  
 f  
 g  
 h  
 i  
 j  
 k  
 l  
 m  
 n  
 o  
 p  
 q  
 r  
 s  
 t  
 u  
 v  
 w  
 x  
 y  
 z  
 ,  
 .  
 /  
 -  
 \_  
 !  
 @  
 #  
 \$  
 %  
 ^  
 &  
 \*  
 ( )  
 { }  
 [ ]  
 |  
 \  
 ;  
 :  
 " '

item	Detalye
<b>Ang haba</b>	Panloob na haba / panlabas na haba 5.81m / 6.06m
<b>Lapad</b>	Panloob na lapad/panlabas na lapad 2.188/2.438m
<b>Taas</b>	Panloob na taas/panlabas na taas 2.410m/2.591m
<b>Pangunahing istraktura</b>	Banayad na bakal
<b>Roof</b>	Sa labas ay 0.4mm kulay bakal bilang ang ibabaw, gitna ay 100mm glass wool pagkakabukod. Pinahihintulutang live loading 0.75KN/m <sup>2</sup>
<b>Wall</b>	50mm /75mm /100mm glass wool / rock wool sandwich panel, 0.4mm color steel sheet at 50kg/m <sup>3</sup> glass wool density sa loob.  Ang panlabas na wainscot ay 0.3mm galvanized steel sheet metal, at ang insulasyon ay glass wool / rock wool. Ang materyal na sumusuporta ay 18mm cement Magnesium Fibreboard at ang panloob na dekorasyon ay 1.6mm PVC flooring.
<b>Base</b>	
<b>Pinahihintulutang pag-load</b>	2 KN/m <sup>2</sup>
<b>Window</b>	PVC sliding/casement window o Aluminum Window
<b>Pinto</b>	Sandwich Panel door o Steel security door o glass door, nilagyan ng lock.
<b>Pagpipilian Electric system</b>	Ibinigay ang plano, disenyo at konstruksyon
<b>Teknikal na parameter</b>	water proof, Sound proof, fire prevention at moisture proof