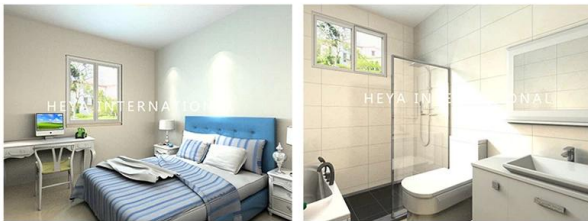
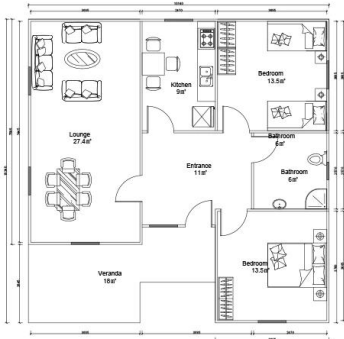
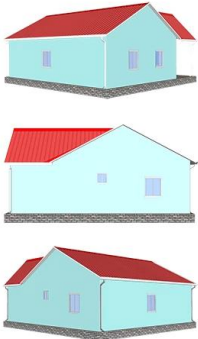
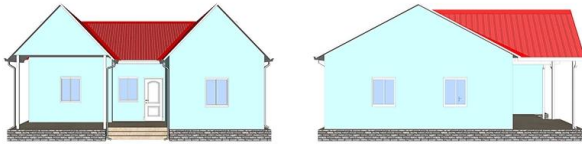


Descrizione del prodotto

Heya-2S09



QUOTATION SHEET						
NO.	Heya-2S09			DATE		
NO	ITEM	DESCRIPTION	UNIT	THEORY QTY	LOSS RATE	ACTUAL QTY
Frame System						
1	Steel structure		m ²	104.00	1.00	T 4.16
2	Fittings		set	104.00	1.00	m ² 104.00
Wall System						
3	External wall foamed cement board	610*2270*190mm	m ²	185.60	1.10	pc 148.00
4	Internal wall foamed cement board	610*2270*160mm	m ²	48.30	1.10	pc 39.00
Roof System						
5	Roof panel	75mm EPS sandwich panel	m	135.40	1.10	m 148.94
Door & Window System						
7	PVC window		m ²	9.12	1.00	m ² 9.12
8	PVC door		m ²	10.80	1.00	m ² 10.80
Decoration System						
9	Ceiling	gypsum board,600*600mm 10pcs/ pack	m ²	104.00	1.10	pack 12.00
10	Floor tile	ceramic tile 600*600mm 10pcs/ pack	m ²	104.00	1.10	pack 12.00
11	Internal Putty	Brand Nippon 15kgs/ bag	m ²	282.20	1.10	bag 21.00
12	Internal wall coating	white, 18L/ bucket	m ²	282.20	1.10	bucket 4.00
13	External wall coating	16L/ bucket	m ²	185.60	1.10	bucket 3.00
Water&Electric System						
14	Drain pipes ,gutter		m	43.00	1.00	m 43.00
15	Water Pipes	inlet & outlet pipes	m ²	104.00	1.00	m ² 104.00
16	Electric system	include weak current,exclude socket/switch/light,etc	m ²	104.00	1.00	m ² 104.00
Hardware Accessories System						
17	Hardware Accessories System		m ²	104.00	1.00	m ² 104.00
Fitting facilities						
18	Toilet		pc	0.00	1.00	pc 0.00
19	Basin		pc	0.00	1.00	pc 0.00
20	Shower		pc	0.00	1.00	pc 0.00
21	Kitchen Cabinet		m	0.00	1.00	m 0.00
Inland transportation						
22	Inland cost	loading fee, truck transport, custom declare, port charges, etc.	nos			1.00
TOTAL PRICE (FOB Qingdao)				\$17,281.21		

