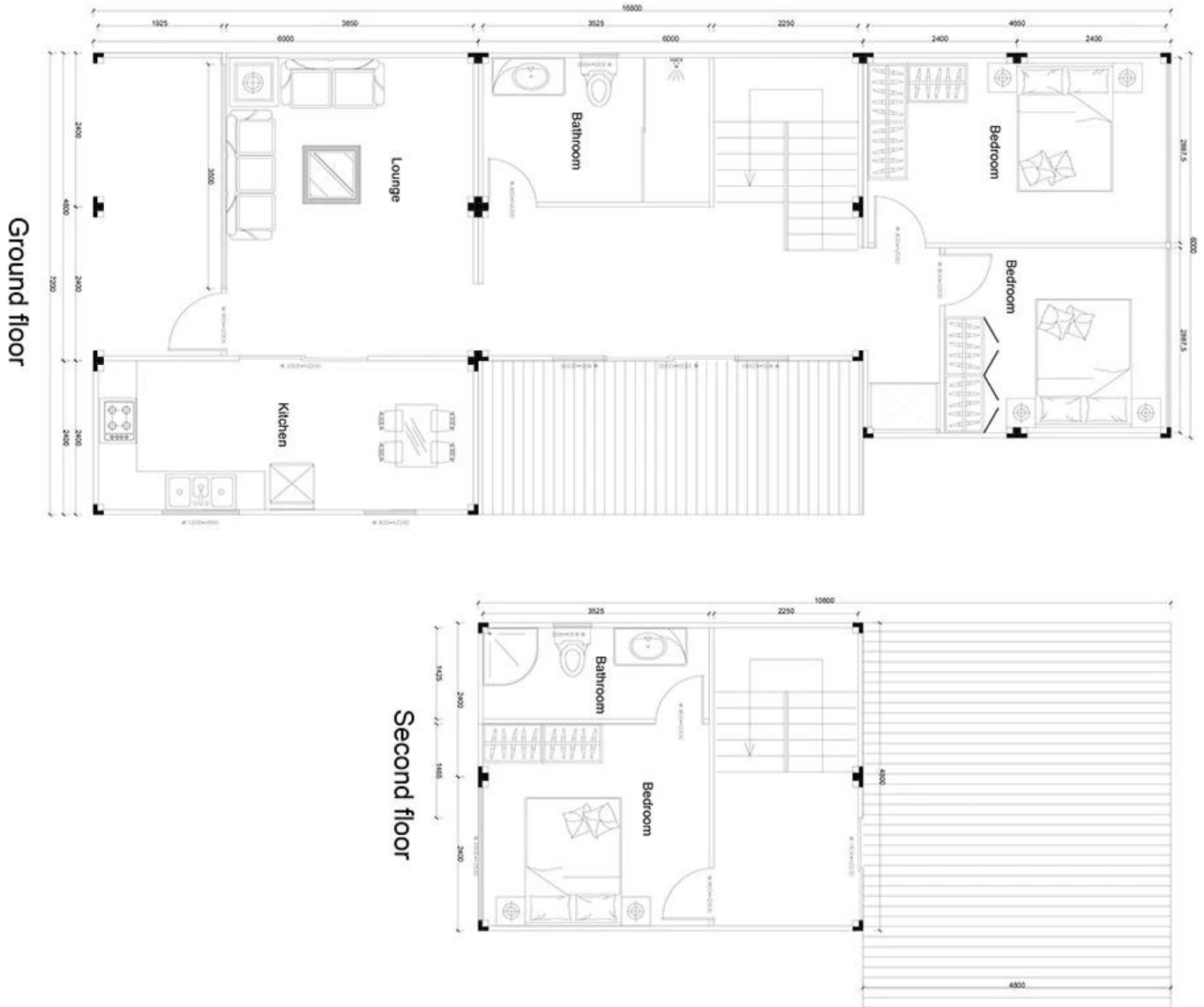


**Residential - (3X03) China Diy Living Container
Manufacturers Prefab Container Home Supplier**





BREAKDOWN QUOTATION SHEET

PROJECT		6000mm*2400mm*2896mm combined modular container		
NO.	NAME	DESCRIPTION	SIZE	QTY UNIT
	<input type="checkbox"/> BASIC ITEM			9 set
1	Roof	color steel buckle plate	0.5mm	9 set
		glasswool insulation		
		galvanized steel keel		
		white metal ceiling	0.3mm	
2	Floor	vinyl leather flooring	1.6mm	9 set
		cement fiber board	1.8mm	
		PE insulation film		
		galvanized steel keel		
3	Column	glvanized steel column	L2580mm	36 pc
4	Drain pipe	Rain drain pipes	white pvc pipe	36 pc
	<input type="checkbox"/> INCREASE ITEM			
5	Wall panel	75mm Glasswool sandwich panel		281.7 □

6	Exterior wall decoration	Hanging board		191.4	□
7	Pergola	Anticorrosive decoration wood		0	m
8	Decking	WPC		43.2	□
9	Guardrail			25.2	□
10	Stair			1	set
11	Window	Aluminium-alloy window		38	□
12	Door	white steel door	800mm*2000mm	5	set
		Aluminium-alloy door		14.6	□
13	Electric system	change into local standard		9	set
		Led light		12	pc
		switch		12	pc
14	Water system	socket		15	pc
		inlet & outlet water pipes		28.05	□
		PVC cover skirting		9	set
15	Assemble Accessories	Connection	module connection lock	38	set
			module top and column connection part covering	105.6	m
		Molding covering	module floor connection part covering	39.6	m
			rubber tape filling between module connection part	72.6	m
			waterproof self glue tape between module connection part	67.8	m
			shower		
16	Facilities(option)	toilet			set
		basin			set
		bed			set
		table			set
		wardrobe			set
Total Amount (Necessary Basic Fitting)					
15	Inland Cost		40HC container loading	2	pcs
			20GP container loading	0	pcs
16	Workers loading Cost		40ft/20ft container	2	pcs
TOTAL AMOUNT(EXW PRICE)-					