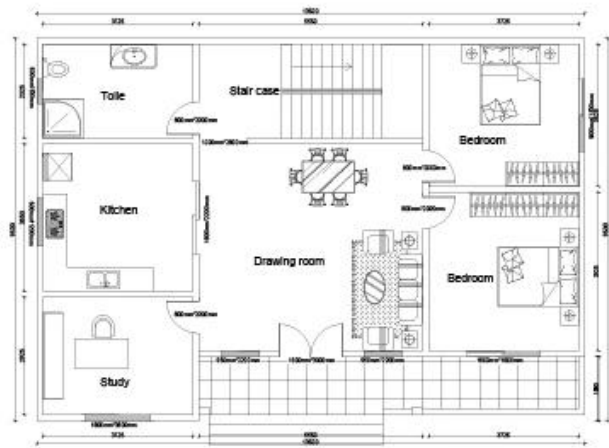
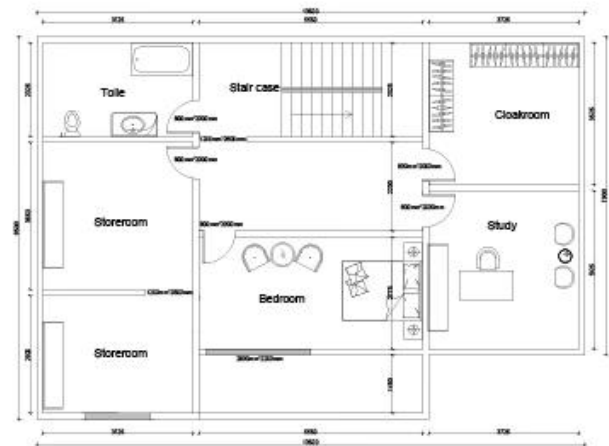


# Steel Structure Villa

Product Photo



Ground floor



Second floor



## Detail

### Technical Parameters

<b>Overall weight</b>	50~60kg/sqm
<b>Seismic fortification intensity</b>	8 grade
<b>Wind-proof capacity</b>	wind speed 20m/s, resist 8 grade wind
<b>Floor loading capacity</b>	150kg/sqm
<b>Roof loading capacity</b>	60kg/sqm
<b>External wall bearing capacity</b>	50kg/sqm

### Packing & Shipping

