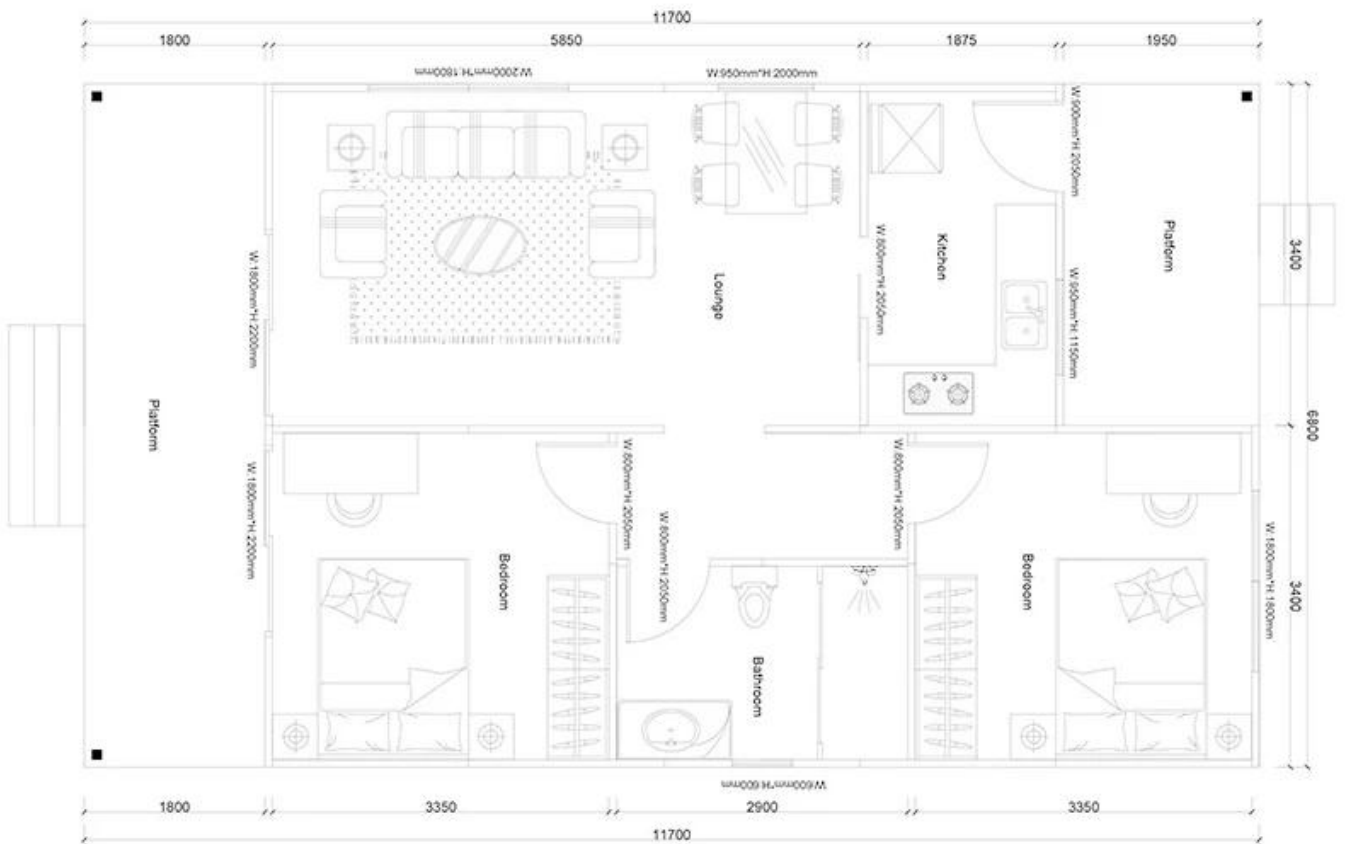


## Product Photo



## Product Detail

### BREAK DOWN QUOTATION SHEET

PROJECT NO.

HY-2-Q11

No. NAME

DESCRIPTION

UNIT

LGS Structure

1 steel structure

□

2 fittings

set

**Wall System**

1	External wall OSB board	1220*2440*9mm	□
2	External wall unidirectional breath paper		□
4	External wall metal carved board	381*3800*16mm +381*4500*16mm	□
5	Internal wall OSB board	1220*2440*9mm	□
6	Internal wall gypsum board	1200*2400*9mm	□
7	Wet district fiber cement board	1220*2440*10mm	□

**Insulation System**

1	Glasswool Insulation	T75mm□12□/roll16Kg/m3	□
2	Glasswool insulation(under roof)	T75mm□12□/roll16Kg/m3	□
3	External wall XPS board	1200*600*40mm	□

**RoofSystem**

1	Roof OSB board/OSB	1220*2440*12mm	□
2	self-paste waterproof coil	T1.5mm□-15°C□20□/roll	□
3	Roof tile	asphalt tile	□
4	Roof ridge tile	asphalt tile	m
5	Roof eaves pvc molding	6m/pc	m
6	PVC closing strip/PVC	4m/pc	m
7	Metal carved board under roof eaves	381*3800*16mm	□

**Door & Window**

1	PVC window		□
2	PVC door		□
3	Accessories for door sill/windowsill	1220*2440*10mm	m

**Water&Electric System**

1	Water Pipes		□
2	Electric system	Include weak current,exclude socket/switch/light,etc	□

**Decoration Accessories System****Hardware Accessories System**