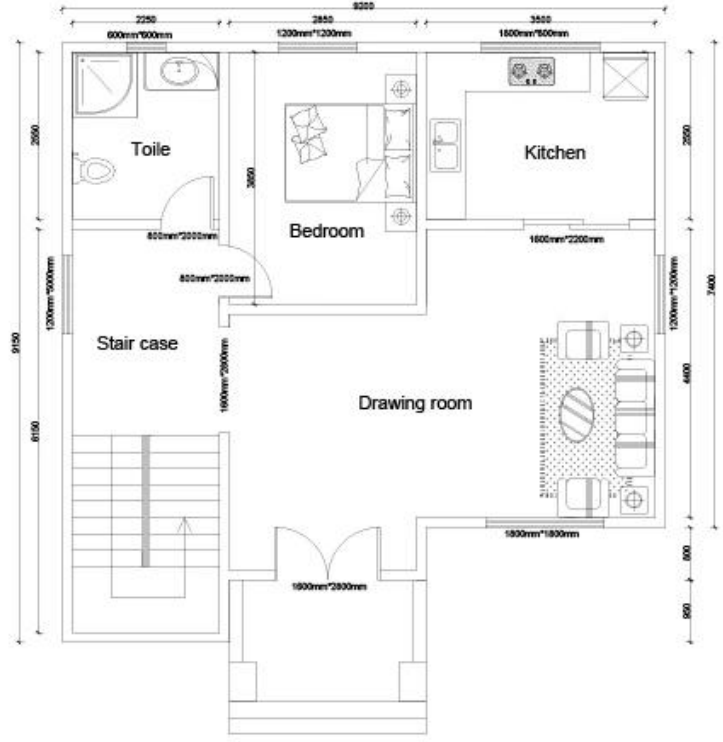
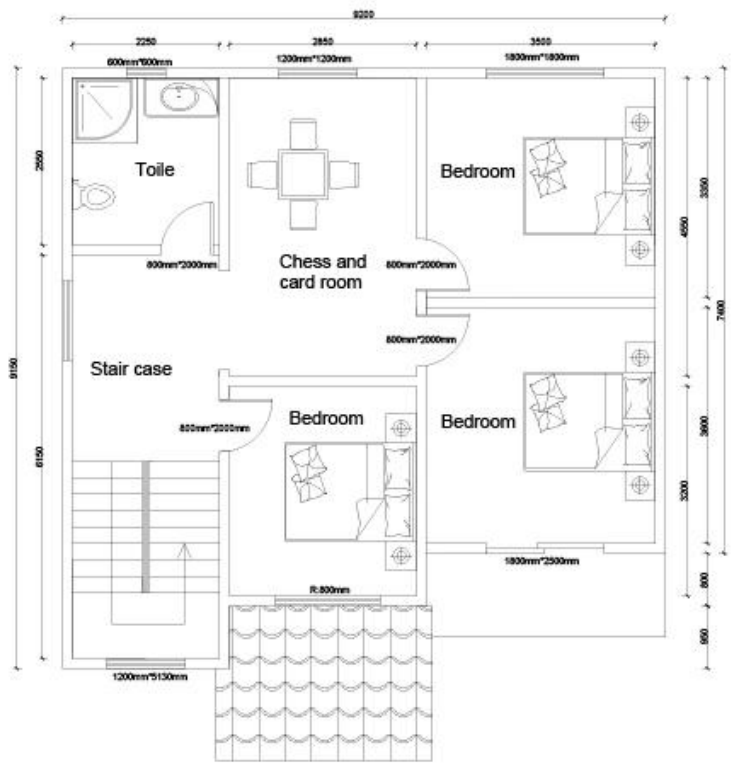


High Quality Luxury Prefabricated Steel Home - QB02

Product Photo



Ground floor



Second floor

points

- a. Prefab houses can be used in building site, low cost, easy installation, reusable, energy conservation.
- b. Used in building site and can be reused in lots of projects, which is very economical.
- c. Prefab houses can be designed as accommodation, office, control center, canteen and so on.
- d. The low-cost, easy assemble and disassemble, reusable are the most outstanding advantages of this house.
- e. We can design the style according to your different requirements and the building site weathers.
It's fireproof, waterproof, quakeproof and heatproof.
- f. The partition of the wall is depend on you, we can design what partition you want.
- g. Excellent in the feature of typhoon and earthquake proofing grade is 8 grades, and the earthquake proofing grade is 7 grades.
- h. The using life is around 10-15 years. Environmental protection and economical.
- I. Each worker can assemble 20~30 square meters every day. 6 workers can finish 300sqm prefab house in 2 days.
- j. Loading: 320 square meters can be loaded in one 40 feet shipping container.

Certificate



Focus on "Quality & Service", one stop service help you save cost, reduce your all worries,turn over perfect project.

Professional design and engineering team: Full solution for steel structure design

Procurement and Manufacture for all material for prefabricated building.

We have a professional procurement team to make sure all the materials are with good

quality.

And our factory operation under ISO/CE/SGS standard, to make sure the fabrication works with high technology.

Site management & Installation supervision, We could send our engineers to help for the installation supervision,

you just need to prepare a team which know normal construction works will be O.K.