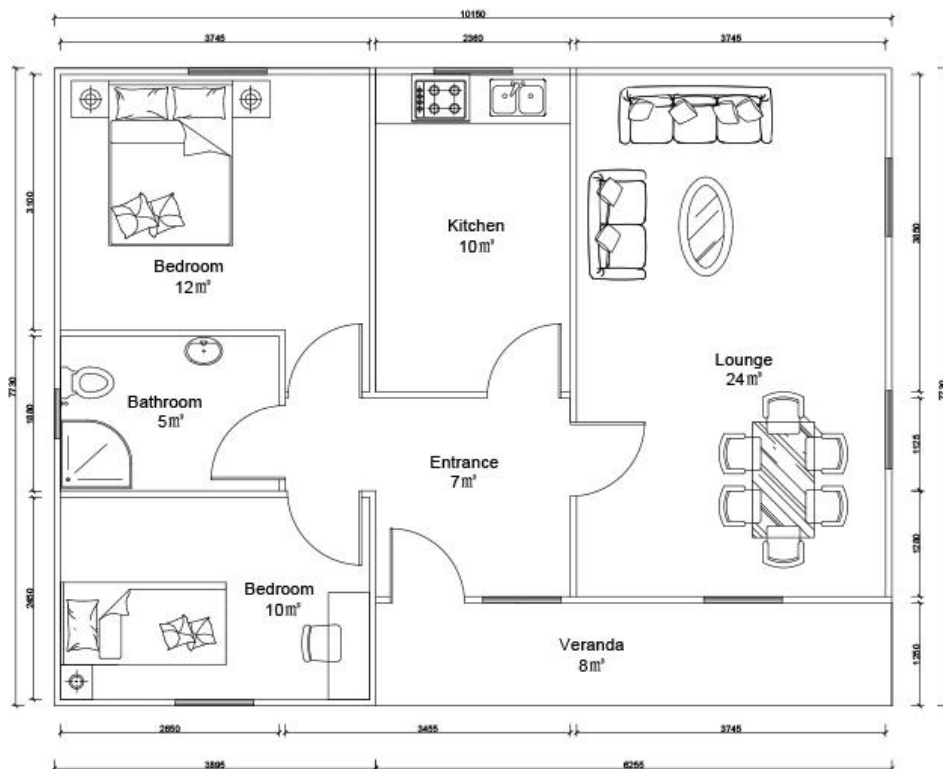


**Prefabricated Frame [EPS Prefabricated Houses](#)**

**Product Description**

# Heya - 2B10-B



## EPS Prefabricated Houses Detail

| No.  | Component name             | Material                      |
|------|----------------------------|-------------------------------|
| 1    | Sharp beam                 | C steel                       |
| 2    | Sliver                     | C steel                       |
| 3    | Ring beam                  | C steel                       |
| 4    | Column                     | Square tube                   |
| 5    | Anchor                     | Channel iron                  |
| 6    | Ridge tile                 | Sheet metal                   |
| 7    | Roof                       | Without corrugated board      |
| 8    | Roof waterproof decoration | Asphalt shingles              |
| 9/11 | Hemming                    | Channel iron                  |
| 10   | Security door              | Steel door                    |
| 12   | Window                     | PVC window                    |
| 13   | Wall panels                | V950 # color plate insulation |
| 14   | Angle package              | Sheet metal                   |

## Certificate



Focus on "Quality & Service", one stop service help you save cost, reduce your all worries, turn over perfect project.

A. Professional design and engineering team: Full solution for steel structure design B.

Procurement and Manufacture for all material for prefabricated building.

We have a professional procurement team to make sure all the materials are with good quality.

And our factory operation under ISO/CE/SGS standard, to make sure the fabrication works with high technology.

C.Site management & Installation supervision, We could send our engineers to help for the installation supervision,

you just need to prepare a team which know normal construction works will be O.K.