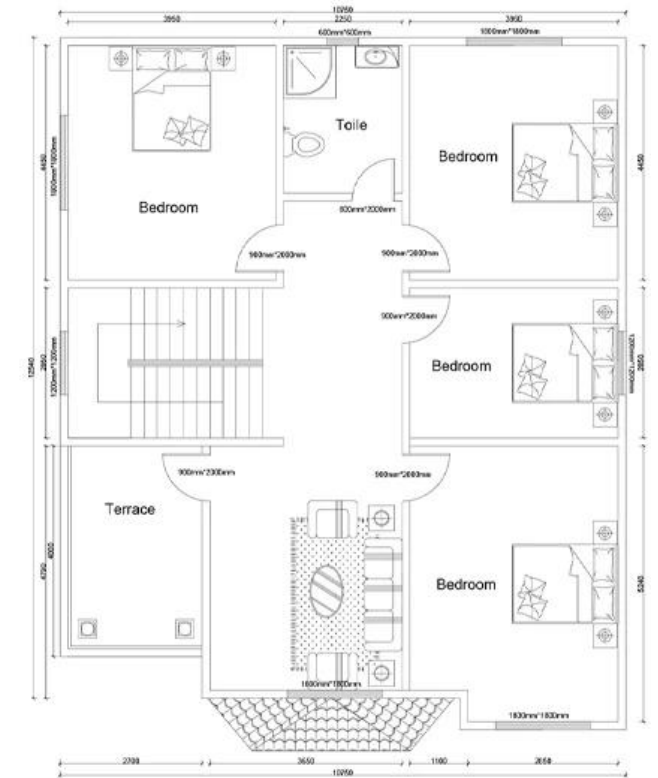


Ground floor



Second floor



Prefab Houses details

Structure

light steel as its main frame, safe and reliable; sandwich panels as its roof and wall boards, looks and beautiful decoration

Environmental protection and economized

prefab houses are reasonable in design, can be removed or recycled more than 5 times

Applications

prefab houses can be used as permanent & temporary residence, laborers accommodation, office, workshop, warehouse, etc

Advantages

High performance in quakeproof, waterproof, windproof, moisture proof, heat insulation and sound insulation

Inside facilities

Floorings, ceiling, water system, electrics, toilets, etc. are optional for clients' choice

Quick installation

It is convenient to install, a skilled worker can install 20sqm-30sqm one day

Transportation

The completely knock-down of prefab house components can save more space of the sea container and make the freight cost of house much lower