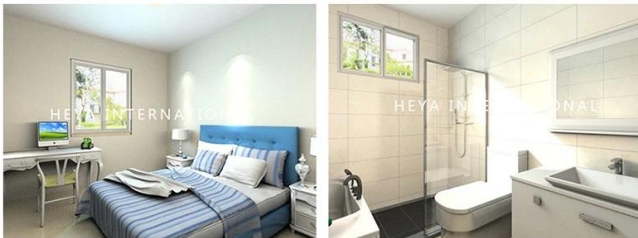


## **Low cost steel frame modular homes in China - 3B03**

### **Product description**

## Heya-3B03-B



BREAKDOWN QUOTATION SHEET			
NO.	HY-3B03-B	DATE	
Item	Description	Qty	Unit
Steel frame	C-type steel purlin and beam, square tube, steel channels	107	m <sup>2</sup>
Exterior Wall	75mm EPS Color Steel Sandwich Panel, pre-cut, with film protection	132	m
Interior Wall	75mm EPS Color Steel Sandwich Panel, pre-cut, with film protection	114.8	m
Roof	75mm EPS Color Steel Sandwich Panel, pre-cut, with film protection	239.2	m
Ceiling	PVC ceiling	107	m <sup>2</sup>
Floor	Ceramic tile 800x800mm	107	m <sup>2</sup>
Roof decoration	Asphalt tile	124.7	m <sup>2</sup>
External Wall decoration	Metal carved plate	130.4	m <sup>2</sup>
Door	Out door (Steel door) 900*2000mm	1	pcs
	Bathroom door 800mm x 2000mm (water proof)	7	pcs
Windows	PVC sliding window 950(W)*1000mm(H)	10	pcs
	PVC sliding window 950(W)*600mm(H)	1	pcs
Drain system	Drain pipes, gutter	64	m
Electric system		107	m <sup>2</sup>
Accessories	Kinds of necessary screws, sealant, ridge tile, packet eaves, flashing, channel iron	107	m <sup>2</sup>
<b>Total Amount (Necessary Basic Fitting)</b>		<b>\$13,549.20</b>	
Inland Cost	40HC container loading	1	pcs
Workers loading Cost	40ft/20ft container	1	pcs
<b>Total Amount</b>		<b>\$14,499.20</b>	

## Company introduction

Shandong Quality Company is the best Chinese prefabricated housing solution provider. Our products include prefabricated houses, container houses, mobile homes, villas, light steel structures. We have more than 10 years of experience in the sector, in professional production and in the procurement group. maintain long-term cooperation relationships with many well-known manufacturers. We have already completed the project of a container house for refugees in Germany, a prefabricated project in class for Zimbabwe, Prefabricated house in South Africa, project of the prefabricated house of the villages of Uruguay and so on.

Our company is committed to becoming your trusted partner, you focus on your area of expertise, let us help you manage the temporary office and the warehouse of a complete solution.



Our factory is located in the beautiful kite capital of Weifang, Shandong. In recent years, the strength of the factory has grown and developed, and its production strength and quality services have won the praise of our customers from all over the world. We welcome every customer to visit the factory and inspect the product quality.

**Focusing on "Quality and service", a unique service helps you save costs, reduce all**

## worries, transform perfect projects.

A. Professional design and engineering team: complete solution for the design of steel structures

B. Purchase and production of all prefabricated building material. We have a professional procurement team to ensure that all materials are of good quality. And our factory operation according to the ISO / CE / SGS standard, to ensure that the production works with high technology.

C. Site management and installation supervision, we could send our engineers to help with installation supervision, you just have to prepare a team that knows that the normal construction work will be O.K.

## Packaging and transport

Packing details: 1, delivery by 40'HQ container. Flat pack 2, 4 in 1

Delivery details: 3-20 days after the order



## Our customers



## FAQ

1, what is the payment term?

50% deposit via TT, 50% balance before loading containers with TT; 100% LC at sight (total payment exceeding 100,000 USD);

2, how about shipping?

We use 40HQ containers to ship the goods; Usually the 40HQ container can load around 160-180 square meters of house.

3, delivery time?

Depends on MOQ, we can usually arrange the shipment about 10 days after the deposit received.

4, how to install?

Usually we will provide the installation drawing and, if necessary, we will also provide the installation video.

5, can you send workers to help me build a house?

Considering labor, security and visa costs, we recommend sending one or two engineers to guide and train your staff.

It is necessary to provide airline, hotel and meal tickets and 100 USD a day for the salary of the engineers.