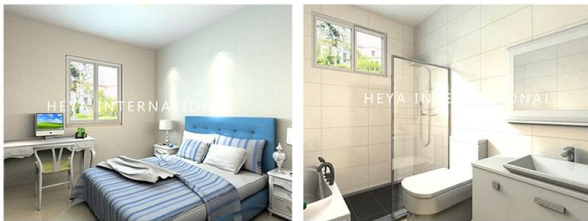
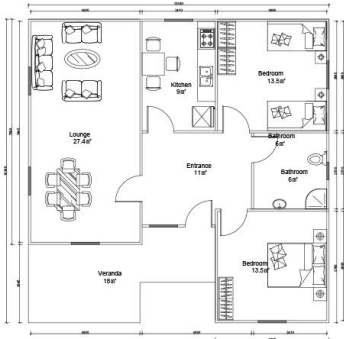
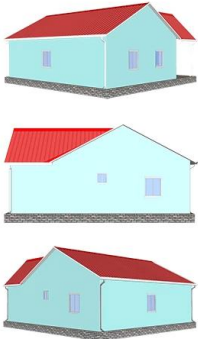
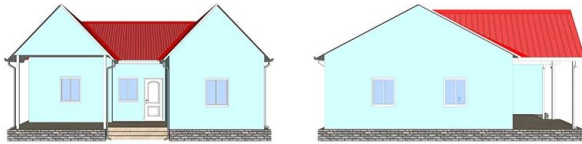


## **Product description**

# Heya-2S09



QUOTATION SHEET						
NO.	Heya-2S09		DATE			
NO	ITEM	DESCRIPTION	UNIT	THEORY QTY	LOSS RATE	ACTUAL QTY
<b>Frame System</b>						
1	Steel structure		m <sup>2</sup>	104.00	1.00	T 4.16
2	Fittings		set	104.00	1.00	m <sup>2</sup> 104.00
<b>Wall System</b>						
3	External wall foamed cement board	610*2270*190mm	m <sup>2</sup>	185.60	1.10	pc 148.00
4	Internal wall foamed cement board	610*2270*160mm	m <sup>2</sup>	48.30	1.10	pc 39.00
<b>Roof System</b>						
5	Roof panel	75mm EPS sandwich panel	m	135.40	1.10	m 148.94
<b>Door &amp; Window System</b>						
7	PVC window		m <sup>2</sup>	9.12	1.00	m <sup>2</sup> 9.12
8	PVC door		m <sup>2</sup>	10.80	1.00	m <sup>2</sup> 10.80
<b>Decoration System</b>						
9	Ceiling	gypsum board,600*600mm 10pcs/ pack	m <sup>2</sup>	104.00	1.10	pack 12.00
10	Floor tile	ceramic tile 600*600mm 10pcs/ pack	m <sup>2</sup>	104.00	1.10	pack 12.00
11	Internal Putty	Brand Nippon 15kgs/ bag	m <sup>2</sup>	282.20	1.10	bag 21.00
12	Internal wall coating	white,18L/ bucket	m <sup>2</sup>	282.20	1.10	bucket 4.00
13	External wall coating	16L/ bucket	m <sup>2</sup>	185.60	1.10	bucket 3.00
<b>Water&amp;Electric System</b>						
14	Drain pipes ,gutter		m	43.00	1.00	m 43.00
15	Water Pipes	inlet & outlet pipes	m <sup>2</sup>	104.00	1.00	m <sup>2</sup> 104.00
16	Electric system	include weak current,exclude socket/switch/light,etc	m <sup>2</sup>	104.00	1.00	m <sup>2</sup> 104.00
<b>Hardware Accessories System</b>						
17	Hardware Accessories System		m <sup>2</sup>	104.00	1.00	m <sup>2</sup> 104.00
<b>Fitting facilities</b>						
18	Toilet		pc	0.00	1.00	pc 0.00
19	Basin		pc	0.00	1.00	pc 0.00
20	Shower		pc	0.00	1.00	pc 0.00
21	Kitchen Cabinet		m	0.00	1.00	m 0.00
<b>Inland transportation</b>						
22	Inland cost	loading fee,truck transport,custom declare, port charges,etc.	nos			1.00
<b>TOTAL PRICE (FOB Qingdao)</b>				<b>\$17,281.21</b>		

