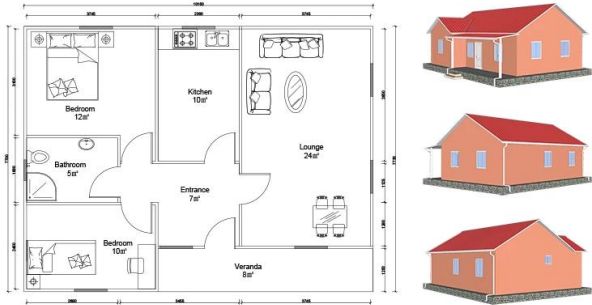


## **Product description**

# Heya-2S06



QUOTATION SHEET							
NO.	Heya-2S06					DATE	
NO	ITEM	DESCRIPTION	UNIT	THEORY QTY	LOSS RATE	UNIT	ACTUAL QTY
<b>Frame System</b>							
1	Steel structure		m²	78.00	1.00	T	3.12
2	Fittings		set	78.00	1.00	m²	78.00
<b>Wall System</b>							
3	External wall foamed cement board	610*2270*190mm	m²	137.69	1.10	pc	110.00
4	Internal wall foamed cement board	610*2270*160mm	m²	71.15	1.10	pc	57.00
<b>Roof System</b>							
5	Roof panel	75mm EPS sandwich panel	m	87.60	1.10	m	96.36
<b>Door &amp; Window System</b>							
7	PVC window		m²	11.40	1.00	m²	11.40
8	PVC door		m²	10.80	1.00	m²	10.80
<b>Decoration System</b>							
9	Ceiling	gypsum board,600*600mm 10pcs/pack	m²	75.00	1.10	pack	9.00
10	Floor tile	ceramic tile 600*600mm 10pcs/pack	m²	75.00	1.10	pack	9.00
11	Internal Putty	Brand:Nippon 15kgs/bag	m²	279.99	1.10	bag	21.00
12	Internal wall coating	white,18L/bucket	m²	279.99	1.10	bucket	4.00
13	External wall coating	16L/bucket	m²	137.69	1.10	bucket	2.00
<b>Water&amp;Electric System</b>							
14	Drain pipes_gutter		m	38.00	1.00	m	38.00
15	Water Pipes	inlet & outlet pipes	m²	78.00	1.00	m²	78.00
16	Electric system	Include weak current,exclude socket/switch/light,etc	m²	78.00	1.00	m²	78.00
<b>Hardware Accessories System</b>							
17	Hardware Accessories System		m²	78.00	1.00	m²	78.00
<b>Fitting facilities</b>							
18	Toilet		pc	0.00	1.00	pc	0.00
19	Basin		pc	0.00	1.00	pc	0.00
20	Shower		pc	0.00	1.00	pc	0.00
21	Kitchen Cabinet		m	0.00	1.00	m	0.00
<b>Inland Transportation</b>							
22	Inland cost	loading fee,truck transport,custom declare,post charges,etc.	nos				1.00
<b>TOTAL PRICE (FOB Qingdao)</b>				<b>513,561.79</b>			

## Company Introduction

Shandong Heya Company is the best Chinese provider of prefabricated housing solutions.

Our products include prefabricated houses, container houses, mobile homes, villas, light steel structures.

We have more than 10 years of experience in the sector, in professional production and in the purchasing group.

Maintain long-term cooperative relationships with many known manufacturers.

I have already completed the project for a container house for refugees in Germany, a prefabricated class project for Zimbabwe,

Prefabricated house in South Africa, project of the prefabricated house of the towns of Uruguay, etc.

Our company is committed to becoming your trusted partner, you focus on your area of expertise,

Let us help you manage the temporary office and warehouse for a complete solution.



Our factory is located in the beautiful kite capital of Weifang, Shandong.

In recent years, the strength of the factory has grown and developed,

And its production force and quality services have won the praise of our customers from all over the world.

We welcome all customers to visit the factory and inspect product quality.

## certificate



Focusing on "Quality and service", a comprehensive service helps you save costs, reduce all worries, convert perfect projects.

A. Professional design and engineering team: complete solution for the design of steel structures B.

Acquisition and manufacturing of all prefabricated building material.

We have a professional procurement team to ensure that all materials are of good quality.

And our factory operation in accordance with the ISO / CE / SGS standard, to ensure that manufacturing works with high technology.

C. Site administration and installation supervision, we could send our engineers to help with the installation supervision,

you just have to prepare a team that knows that the normal construction work will be O.K.

## Packing and transport

Packing details: 1, delivery of 40'HQ container. Flat packing 2, 4 in 1

Delivery details: 3-20 days after order.



## Our clients





## Frequent questions

1, what is your payment term?

50% deposit through TT, 50% balance before loading containers with TT; 100% LC at sight (total payment of more than 100,000 USD);

2, how about the shipping?

We use 40HQ containers to ship the products; Usually, the 40HQ container can load around 160-180 square meters of house.

3, delivery time?

It depends on MOQ, we can usually arrange the shipment about 10 days after the deposit received.

4, how to install?

Usually, we will provide the installation drawing and, if necessary, we will also provide the installation video.

5, can you send workers to help me build a house?

Taking into account labor costs, security and visa problems, we recommend sending one or two engineers to guide and train your staff.

It is necessary to provide air tickets, hotel and food and USD 100 per day for the salary of the engineers.