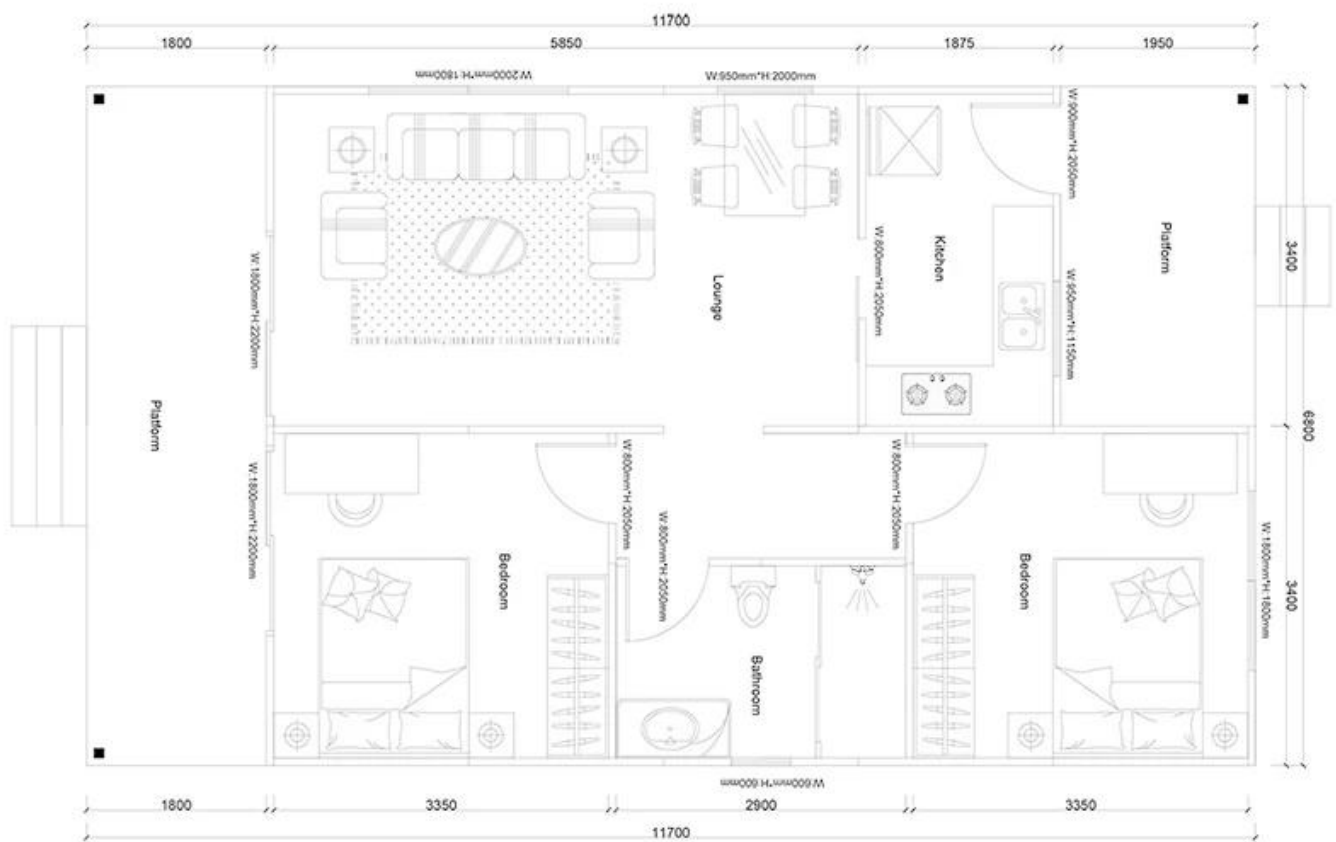


China modular house for sale

Product Photo



Product Detail

QUOTATION SHEET

NO. HY-2-S11

PROJECT

NO ITEM

DESCRIPTION

UNIT

Frame System

1 Steel structure

□

2 Fittings

set

WallSystem

3	External wall foamed cement board 610*2270*T90mm	□
4	Internal wall foamed cement board 610*2270*T60mm	□

Roof System

5	Roof panel	75mm EPS sandwich panel	m
---	------------	-------------------------	---

Door & Window System

7	PVC window		□
8	PVC door		□

Decoration System

9	Ceiling	gypsum board,600*600mm10pcs/pack	□
10	Floor tile	ceramic tile 600*600mm, 10pcs/pack	□
11	Internal Putty	Brand:Nippon 15kgs/bag	□
12	Internal wall coating	white,18L/bucket	□
13	External wall coating	16L/bucket	□

Water&Electric System

14	Drain pipes ,gutter		m
15	Water Pipes	inlet & outlet pipes	□
16	Electric system	Include weak current,exclude socket/switch/light,etc	□

Hardware Accessories System

17	Hardware Accessories System		□
----	-----------------------------	--	---

Fitting facilities

18	Toilet		pc
19	Basin		pc
20	Shower		pc
21	Kitchen Cabinet		m