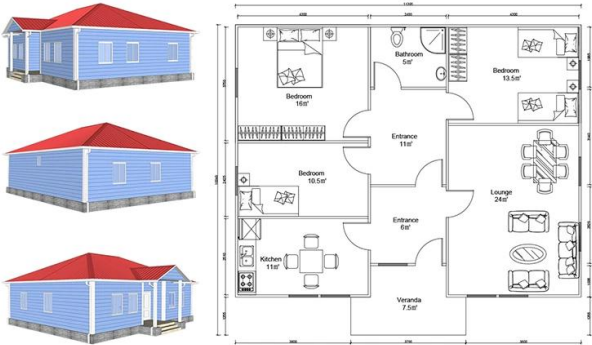


Descripción del producto

Heya-3S03



| QUOTATION SHEET | | | | | | | |
|------------------------------------|-----------------------------------|--|------|--------------------|-----------|--------|------------|
| Heya-3S03 | | | | | | | |
| NO | ITEM | DESCRIPTION | UNIT | THEORY QTY | LOSS RATE | UNIT | ACTUAL QTY |
| Frame System | | | | | | | |
| 1 | Steel structure | | m² | 107.00 | 1.00 | T | 4.28 |
| 2 | Fittings | | set | 107.00 | 1.00 | m² | 107.00 |
| Wall System | | | | | | | |
| 3 | External wall foamed cement board | 610*2270*130mm | m² | 127.00 | 1.10 | pc | 101.00 |
| 4 | Internal wall foamed cement board | 610*2270*130mm | m² | 100.00 | 1.10 | pc | 80.00 |
| Roof System | | | | | | | |
| 5 | Roof panel | 75mm EPS sandwich panel | m | 239.20 | 1.10 | m | 263.12 |
| Door & Window System | | | | | | | |
| 7 | PVC window | | m² | 12.54 | 1.00 | m² | 12.54 |
| 8 | PVC door | | m² | 14.40 | 1.00 | m² | 14.40 |
| Decoration System | | | | | | | |
| 9 | Ceiling | gypsum board,600*600mm 10pcs/pack | m² | 107.00 | 1.10 | pack | 12.00 |
| 10 | Floor tile | ceramic tile 600*600mm 10pcs/pack | m² | 107.00 | 1.10 | pack | 12.00 |
| 11 | Internal Putty | Brand:Nippon 15kgs/bag | m² | 327.00 | 1.10 | bag | 24.00 |
| 12 | Internal wall coating | white,18L/bucket | m² | 327.00 | 1.10 | bucket | 4.00 |
| 13 | External wall coating | 16L bucket | m² | 127.00 | 1.10 | bucket | 2.00 |
| Water&Electric System | | | | | | | |
| 14 | Drain pipes_gutter | | m | 43.00 | 1.00 | m | 43.00 |
| 15 | Water Pipes | inlet & outlet pipes | m² | 107.00 | 1.00 | m² | 107.00 |
| 16 | Electric system | Include weak current,exclude socket/switch/light,etc | m² | 107.00 | 1.00 | m² | 107.00 |
| Hardware Accessories System | | | | | | | |
| 17 | Hardware Accessories System | | m² | 107.00 | 1.00 | m² | 107.00 |
| Fitting facilities | | | | | | | |
| 18 | Toilet | | pc | 0.00 | 1.00 | pc | 0.00 |
| 19 | Basin | | pc | 0.00 | 1.00 | pc | 0.00 |
| 20 | Shower | | pc | 0.00 | 1.00 | pc | 0.00 |
| 21 | Kitchen Cabinet | | m | 0.00 | 1.00 | m | 0.00 |
| Inland Transportation | | | | | | | |
| 22 | Inland cost | loading fee,truck transport,custom declare,post charges,etc. | nos | | | | 1.00 |
| TOTAL PRICE (FOB Qiongdao) | | | | \$18,484.93 | | | |

