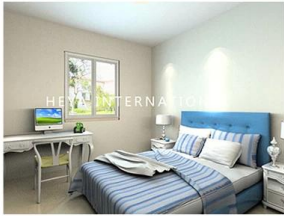
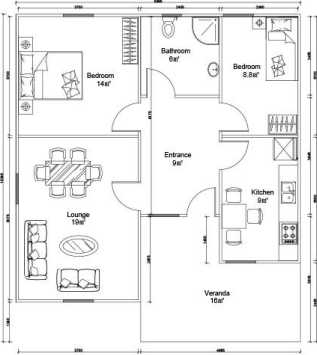


Descripción del producto

Heya-2S08



QUOTATION SHEET						
NO.	Heya-2S08		DATE			
NO	ITEM	DESCRIPTION	UNIT	THEORY QTY	LOSS RATE	ACTUAL QTY
Frame System						
1	Steel structure		m ²	91	1	T 3.64
2	Fittings		set	91	1	m ² 91
Wall System						
3	External wall foamed cement board	610*2270*190mm	m ²	144.276	1.1	pc 115
4	Internal wall foamed cement board	610*2270*160mm	m ²	58.618	1.1	pc 47
Roof System						
5	Roof panel	75mm EPS sandwich panel	m	111.6	1.1	m 122.76
Door & Window System						
7	PVC window		m ²	7.98	1	m ² 7.98
8	PVC door		m ²	10.8	1	m ² 10.8
Decoration System						
9	Ceiling	gypsum board,600*600mm 10pcs/pack	m ²	91	1.1	pack 11
10	Floor tile	ceramic tile 600*600mm 10pcs/pack	m ²	91	1.1	pack 11
11	Internal Putty	Brand Nippon 15kg/bag	m ²	261.5	1.1	bag 20
12	Internal wall coating	white,18L/bucket	m ²	261.5	1.1	bucket 3
13	External wall coating	16L/bucket	m ²	144.8	1.1	bucket 2
Water&Electric System						
14	Drain pipes ,gutter		m	43	1	m 43
15	Water Pipes	inlet & outlet pipes	m ²	91	1	m ² 91
16	Electric system	Include weak current,exclude socket/switch/light,etc	m ²	91	1	m ² 91
Hardware,Accessories System						
17	Hardware Accessories System		m ²	91	1	m ² 91
Fitting facilities						
18	Toilet		pc	0	1	pc 0
19	Basin		pc	0	1	pc 0
20	Shower		pc	0	1	pc 0
21	Kitchen Cabinet		m	0	1	m 0
Inland Transportation						
22	Inland cost	loading fee,truck transport,custom declare port charges,etc.	nos			261.50 1.00
TOTAL PRICE (FOB Qingdao)				515,171.59		

