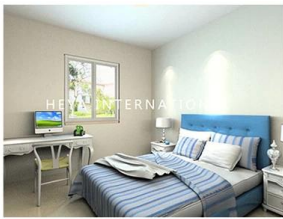
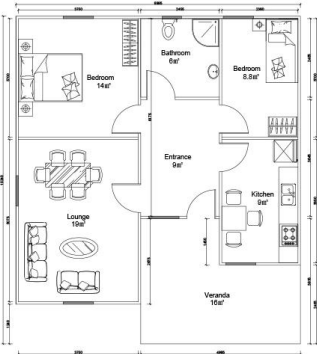


## **Produktbeschreibung**

# Heya-2S08



## QUOTATION SHEET

NO.		Heya-2S08		DATE			
NO	ITEM	DESCRIPTION	UNIT	THEORY QTY	LOSS RATE	UNIT	ACTUAL QTY
<b>Frame System</b>							
1	Steel structure		m <sup>2</sup>	91	1	T	3.64
2	Fittings		set	91	1	m <sup>2</sup>	91
<b>Wall System</b>							
3	External wall foamed cement board	610*2270*190mm	m <sup>2</sup>	144.276	1.1	pc	115
4	Internal wall foamed cement board	610*2270*160mm	m <sup>2</sup>	58.618	1.1	pc	47
<b>Roof System</b>							
5	Roof panel	75mm EPS sandwich panel	m	111.6	1.1	m	122.76
<b>Door &amp; Window System</b>							
7	PVC window		m <sup>2</sup>	7.98	1	m <sup>2</sup>	7.98
8	PVC door		m <sup>2</sup>	10.8	1	m <sup>2</sup>	10.8
<b>Decoration System</b>							
9	Ceiling	gypsum board,600*600mm 10pcs/pack	m <sup>2</sup>	91	1.1	pack	11
10	Floor tile	ceramic tile 600*600mm 10pcs/pack	m <sup>2</sup>	91	1.1	pack	11
11	Internal Putty	Brand Nippon 15kg/bag	m <sup>2</sup>	261.5	1.1	bag	20
12	Internal wall coating	white,18L/bucket	m <sup>2</sup>	261.5	1.1	bucket	3
13	External wall coating	16L/bucket	m <sup>2</sup>	144.8	1.1	bucket	2
<b>Water&amp;Electric System</b>							
14	Drain pipes ,gutter		m	43	1	m	43
15	Water Pipes	inlet & outlet pipes	m <sup>2</sup>	91	1	m <sup>2</sup>	91
16	Electric system	Include weak current,exclude socket/switch/light,etc	m <sup>2</sup>	91	1	m <sup>2</sup>	91
<b>Hardware,Accessories System</b>							
17	Hardware Accessories System		m <sup>2</sup>	91	1	m <sup>2</sup>	91
<b>Fitting facilities</b>							
18	Toilet		pc	0	1	pc	0
19	Basin		pc	0	1	pc	0
20	Shower		pc	0	1	pc	0
21	Kitchen Cabinet		m	0	1	m	0
<b>Inland Transportation</b>							
22	Inland cost	loading fee,truck transport,custom declare port charges,etc.	nos				1.00
<b>TOTAL PRICE (FOB Qingdao)</b>				<b>515,171.59</b>			

