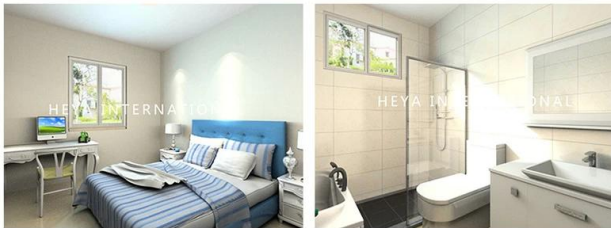
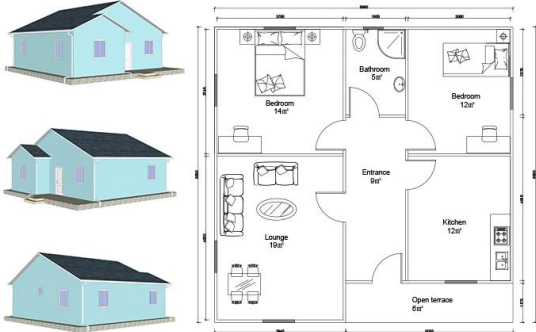
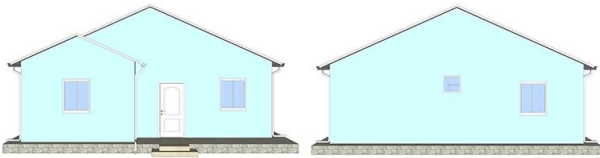


□□□□□ □□□

Heya-2S04



QUOTATION SHEET

| NO. | HY-2S04 | DATE | |
|----------------------------|---|-------------|----------------|
| Item | Description | Qty | Unit |
| Steel frame | Beam HN200*100\HN250*125\square tube120x5mm | 74 | m ² |
| Exterior Wall | 90mm ASA Sandwich Panel\90mm ASA | 135.128 | m ² |
| Interior Wall | 90mm ASA Sandwich Panel\90mm ASA | 67.578 | m ² |
| Roof | 90mm ASA Sandwich Panel\90mm | 90.05 | m ² |
| | asphalt shingles | 90.05 | m ² |
| Door | Out door (Steel door)\900*2000mm | 1 | pcs |
| | Inside door(MDF door)\800*2000mm | 4 | pcs |
| | bathroom door\PVC800mm x 2000mm(water proof) | 1 | pcs |
| Windows | PVC sliding window /PVC950(W)*1000mm(H) | 6 | pcs |
| | PVC sliding window /PVC950(W)*600mm(H) | 1 | pcs |
| Accessories | kinds of necessary screws\U type clipsealant\Special binder | 74 | m ² |
| Ceiling | PVC strip ceiling\PVC | 74 | m ² |
| Floor | ceramic tile/ 800x800mm | 74 | m ² |
| Drain system | drain pipes \gutter | 33 | m |
| EXW COST | | \$12,597.67 | |
| Inland Cost | 40HC container loading | 1 | pcs |
| | 20GP container loading | 0 | pcs |
| Workers loading Cost | 40ft\20ft container | 1 | pcs |
| Total Amount (FOB Qingdao) | | \$13,547.67 | |