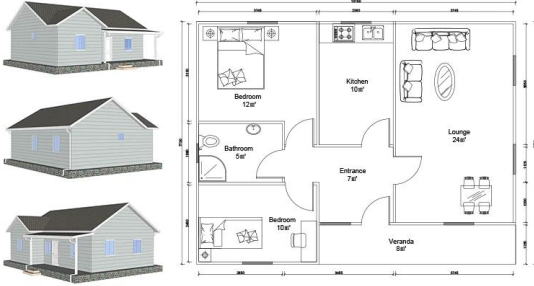


□□□□□ □□□

Heya-2Q06



NAME	DESCRIPTION	UNIT	THEORY QTY	LOSS RATE	UNIT	ACTUAL QTY
LGS Structure						
steel structure		m²	78.00	1.00	T	2.57
fittings		set	78.00	1.00	m²	78.00
Wall System						
External wall OSB board	1220*2440*9mm	m²	149.25	1.15	pc	59.60
External wall unidirectional breath paper		m²	158.37	1.20	m²	190.04
External wall metal carved board	381*3800*16mm +381*4500*16mm	m²	149.25	1.15	m²	171.64
Internal wall OSB board	1220*2440*9mm	m²	209.30	1.12	pc	81.39
Internal wall gypsum board	1200*2400*9mm	m²	209.30	1.12	pc	81.39
Wet district fiber cement board	1220*2440*10mm	m²	70.88	1.12	pc	27.57
Insulation System						
Glasswool Insulation	T75mm- 12m³/roll 16Kg/m³	m²	214.72	1.10	roll	19.68
Glasswool insulation(under roof)	T75mm- 12m³/roll 16Kg/m³	m²	81.55	1.10	roll	7.48
External wall XPS board	1200*600*40mm	m²	149.25	1.05	pc	217.66
Roof System						
Roof OSB board OSB	1220*2440*12mm	m²	137.10	1.15	pc	54.75
self-paste waterproof coil	T1.5mm- -15°C- 20m³/roll	m²	137.10	1.20	roll	8.23
Roof tile	asphalt tile	m²	137.10	1.20	pack	58.76
Roof ridge tile	asphalt tile	m	15.40	1.10	pack	2.12
Roof eaves pvc molding /PVC	6m/pc	m	50.00	1.10	pc	9.17
PVC closing strip/PVC	4m/pc	m	50.00	1.10	pc	13.75
Metal carved board under roof eaves	381*3800*16mm	m²	36.08	1.20	pc	30.07
Door & Window						
PVC window		m²	9.12	1.00	m²	9.12
PVC door		m²	10.80	1.00	m²	10.80
Accessories for door sill/window sill	1220*2440*10mm	m	63.80	1.10	pc	4.87
Water&Electric System						
Water Pipes		m²	78.00	1.00	m²	78.00
Electric system	include weak current exclude socket /switch/light etc	m²	78.00	1.00	m²	78.00
Decoration Accessories System		m²	78.00	1.00	m²	78.00
Hardware Accessories System		m²	78.00	1.00	m²	78.00
TOTAL EXW cost						\$15,968.88
TOTAL FOB Qingdao	40ft or 20ft shipping container					\$16,598.88
TOTAL CIF XX						\$18,681.87

Shandong Heya

Shandong Heya .

10



□□□□□ □□□□ □□□□ □□□□□ □□□□□ □□□□ □□□□ □□□□.

□□□□□



□□ □□□□□ □□□□□ □□□□ □□ □□□□□ □□□□□ □□□□□ □□□□ □□□□ □□□□□.

□□□□ □□□□□ □□□□□ □□□□□ □□□□ □□□□□ □□□□□ □□□□ □□□□ □□□□□.

□□□□□□ □□□□□□ □□□□□□ □□□□□ □□□□ □□□□□□ □□□□□□□□.

□□□□ □□□□□ □□ □□□□□ □□□□ □□ □□ □□□□□ □□□□□□ □□□□ □□□□□.

□□□ □□□□□ □□□□□ ISO / CE / SGS □□□□□□□□□□ □□ □□□□ □□ □□□□□ □ □□□□□□□□ □□□□□□□.

□□□ □□□□□□□ □□ □□□□□□□ □□□□□□ □□ □□□□□ □ □□□□□□ □□□□□□ □□□□□ □□□□□ □□□□□□.

□□□□□" □□□□□ □□□□□□□ □□□□□ □□□□ □□ □□□□ □□□□ □□□□ □□□□□□□□.

□□□□□ □□□□□□□ □□□□□□□

40 □□□□□ □□□□□ □□□□□□ □□□□□ □ 1 :□□□□□□□ □□□□□□'hq. 2 □ 4 □□□□□□□ □□□□□□□ 1 □□

□□□□□□ □□□ □□□□ 20-3 :□□□□□□□ □□□□□□□



□□□□□□□





□□□□□□□□

1 □ □□□□□ □□□□ □□ □□

50□ □□□□□ □□□□□ tt □ 50□ □□□□□ □□□□□□□ □□□□ □□ □□□□□□ tt. 100 □ LC □□□□□) □□□□□ □□ □ (□□□□□ 100□000 □□ □□□□ □□□□□□□□)

2 □ □□□□□ □□ □□□□

40 □□□□□ □□□□□□hq 40 □□□□□ □□□□□ .□□□□□□□ □□□□□HQ □□□□ □□□ 180-160 □□□□□ □□□□□ □□□□□ □□□□□□.

