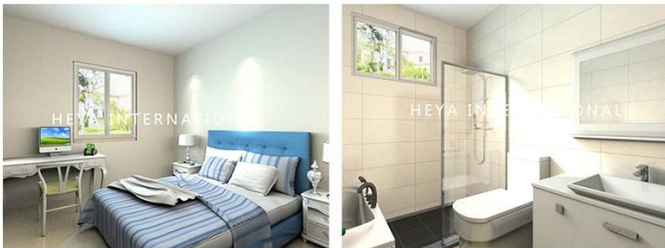


□□□□□ □□□

Heya-2B06-A



BREAKDOWN QUOTATION SHEET

NO.	HY-2B06-A	DATE	
Item	Description	Qty	Unit
Steel frame	C-type steel purlin and beam, square tube, steel channels	78	m ²
Exterior Wall	75mm EPS Color Steel Sandwich Panel, pre-cut, with film protection	142.9	m
Interior Wall	75mm EPS Color Steel Sandwich Panel, pre-cut, with film protection	70	m
Roof	75mm EPS Color Steel Sandwich Panel, pre-cut, with film protection	129.4	m
Ceiling	PVC ceiling	78	m ²
Floor	Ceramic tile 800x800mm	78	m ²
Door	Out door (Steel door) 900*2000mm	1	pcs
	Bathroom door 800mm x 2000mm (water proof)	5	pcs
Windows	PVC sliding window 950(W)*1000mm(H)	7	pcs
	PVC sliding window 950(W)*600mm(H)	1	pcs
Drain system	Drain pipes ,gutter	43	m
Electric system		78	m ²
Accessories	Kinds of necessary screws, sealant, ridge tile, packet eaves, flashing, channel iron	78	m ²
Total Amount (Necessary Basic Fitting)		\$7,546.08	
Inland Cost	40HC container loading	1	pcs
Workers loading Cost	40ft/20ft container	1	pcs
Total Amount		\$8,496.08	

Shandong Heya .

Shandong Heya .

Shandong Heya .

Shandong Heya .

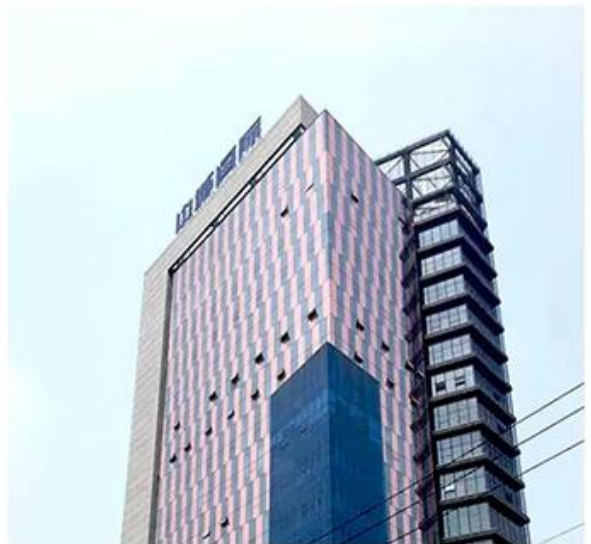
Shandong Heya .

Shandong Heya .

Shandong Heya .

Shandong Heya .

Shandong Heya .



Shandong Heya .

Shandong Heya .

Shandong Heya .

□□□□□ □□□□□□□ □□□□□□□

40 □□□□□ □□□□□ □□□□□□ □□□□□ □ 1 :□□□□□□□ □□□□□□'hq. 2 □ 4 □□□□□□□ □□□□□□□ 1 □□

□□□□□□ □□□ □□□□ 20-3 :□□□□□□□ □□□□□□□



□□□□□□□





□□□□□□□□

1 □ □□□□□ □□□□ □□ □□

50□ □□□□□ □□□□□ tt □ 50□ □□□□□ □□□□□□□ □□□□ □□ □□□□□□ tt. 100 □ LC □□□□□) □□□□□ □□ □ (□□□□□ 100□000 □□ □□□□ □□□□□□□□)

2 □ □□□□□ □□ □□□□

40 □□□□□ □□□□□□hq 40 □□□□□ □□□□□ .□□□□□□□ □□□□□HQ □□□□ □□□ 180-160 □□□□□ □□□□□ □□□□□ □□□□□□.

