

Products Category

① Normal dryback

- UV coating
- Transparent top layer
- Decorative layer
- Center layer
- Base backing



Available size:

18"x18" (457.2x457.2mm)	6" x36" (152.4x914.4mm)	Thickness from 2.0mm to 3.0mm
12"x24" (304.8x609.6mm)	9"x48" (228.6x1219.2mm)	Wearlayer from 0.1mm to 0.7mm
6"x48" (152.4x1219.2mm)	7" x48" (177.8x1219.2mm)	

② LVT Click [Both available unilin click and valinge click system]

- UV coating
- Wear resistant layer
- Decorative layer
- Upper bottom
- Glass fiber
- Middle bottom
- Lower layer bottom



Available size:

180x1220mm	221.1x1219.5mm	Thickness 4.0mm 4.5mm 5.0mm
230x1220mm	144.9x1211.7mm	Wearlayer :0.3mm 0.5mm
179.5x1219.5mm		

③ SPC Click [Both available unilin and valinge click system]

Available size: 180×1220mm 225×1230mm

PVC Plank Collection

Deep wood emboss



wood emboss



Hard scrape emboss



Line emboss



EIR emboss



Available size:

6"x36" (152.4x914.4mm)	6"x48" (152.4x1219.2mm)
7"x48" (177.8x1219.2mm)	9"x48" (228.6x1219.2mm)
187x1227mm / 236x1227mm / 238x1230mm	

Quality Supply Chain(QSC)

Email:admin@sdqsc.com Whatsapp:+8613153691144



XLD102



XLD102-3



XLD102-6



XLD-001



XLD-002



XLD-003



XLD-004



XLD-005



XLD-006



XLD-007



XLD-008



XLD-009



XLD-010



XLD-011



XLD-012



XLD-013



XLD-014



XLD-015



XLD-016



XLD-017

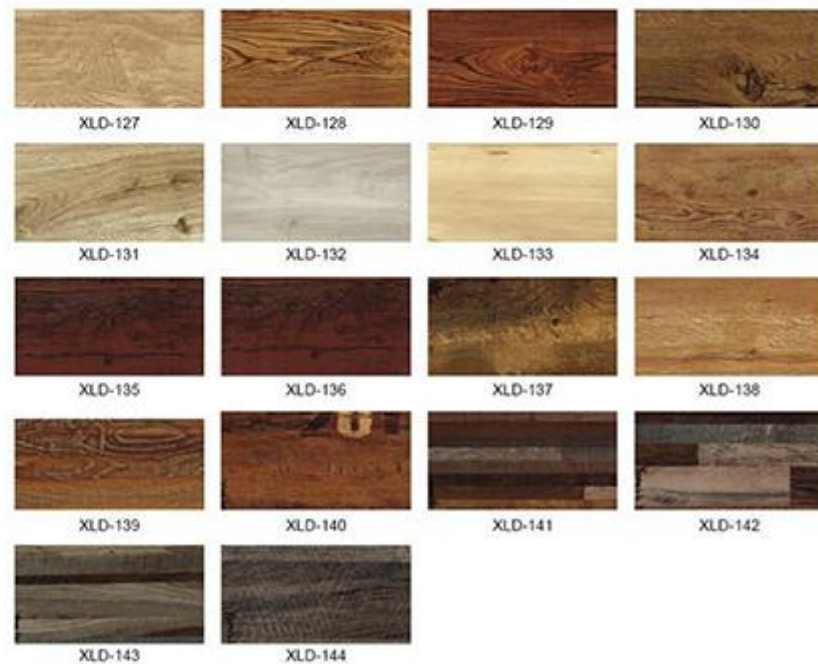


XLD-018









PVC TILE COLLECTION



XLD-145



XLD-146



XLD-147



XLD-148



XLD-149



XLD-150

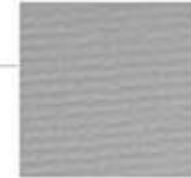


XLD-151

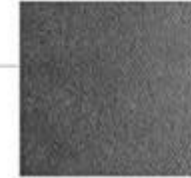


XLD-152

carpet emboss



lizard emboss



sand stone



slate-marble



Available size:

18"X18"(457.2X457.2mm) 12"X24"(304.8X609.6mm) 300x600/600X600mm

