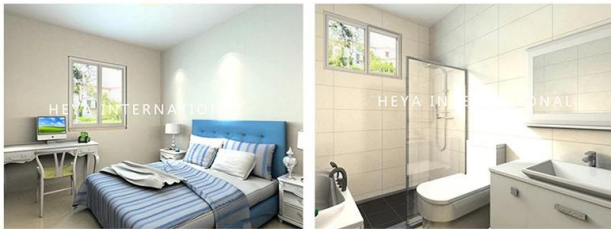
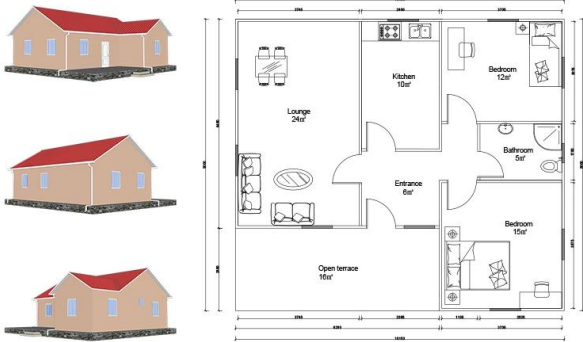


## **Descripción del producto**

# Heya-2S05



QUOTATION SHEET							
NO.	Heya-2S05					DATE	
NO	ITEM	DESCRIPTION	UNIT	THEORY QTY	LOSS RATE	UNIT	ACTUAL QTY
<b>Frame System</b>							
1	Steel structure		m <sup>2</sup>	75.00	1.00	T	3.00
2	Fittings		set	75.00	1.00	m <sup>2</sup>	75.00
<b>Wall System</b>							
3	External wall foamed cement board	610*2270*T90mm	m <sup>2</sup>	137.69	1.10	pc	110.00
4	Internal wall foamed cement board	610*2270*T60mm	m <sup>2</sup>	71.15	1.10	pc	57.00
<b>Roof System</b>							
5	Roof panel	75mm EPS sandwich panel	m	87.60	1.10	m	96.36
<b>Door &amp; Window System</b>							
7	PVC window		m <sup>2</sup>	11.40	1.00	m <sup>2</sup>	11.40
8	PVC door		m <sup>2</sup>	10.80	1.00	m <sup>2</sup>	10.80
<b>Decoration System</b>							
9	Ceiling	gypsum board,600*600mm 10pcs/pack	m <sup>2</sup>	75.00	1.10	pack	9.00
10	Floor tile	ceramic tile 600*600mm 10pcs/pack	m <sup>2</sup>	75.00	1.10	pack	9.00
11	Internal Putty	Brand Nippon 15kgs bag	m <sup>2</sup>	279.99	1.10	bag	21.00
12	Internal wall coating	white,18L bucket	m <sup>2</sup>	279.99	1.10	bucket	4.00
13	External wall coating	16L bucket	m <sup>2</sup>	137.69	1.10	bucket	2.00
<b>Water&amp;Electric System</b>							
14	Drain pipes ,gutter		m	38.00	1.00	m	38.00
15	Water Pipes	inlet & outlet pipes	m <sup>2</sup>	75.00	1.00	m <sup>2</sup>	75.00
16	Electric system	Include weak current ,exclude socket /switch/light,etc	m <sup>2</sup>	75.00	1.00	m <sup>2</sup>	75.00
<b>Hardware Accessories System</b>							
17	Hardware Accessories System		m <sup>2</sup>	75.00	1.00	m <sup>2</sup>	75.00
<b>Fitting facilities</b>							
18	Toilet		pc	0.00	1.00	pc	0.00
19	Basin		pc	0.00	1.00	pc	0.00
20	Shower		pc	0.00	1.00	pc	0.00
21	Kitchen Cabinet		m	0.00	1.00	m	0.00
<b>Inland Transportation</b>							
22	Inland cost	loading fee,truck transport ,custom declare port charges,etc.	nos				1.00
<b>TOTAL PRICE (FOB Qingdao)</b>				<b>\$13,748.72</b>			